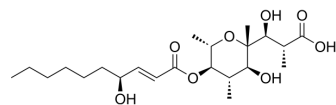


Homobotcinolide

Cat. No.:	HY-N12652
CAS No.:	177182-59-1
Molecular Formula:	C ₂₂ H ₃₈ O ₈
Molecular Weight:	430.53
Target:	Others
Pathway:	Others
Storage:	Please store the product under the recommended conditions in the Certificate of Analysis.



BIOLOGICAL ACTIVITY

Description

Homobotcinolide is a novel bioactive natural product that can be isolated from *Botrytis cinerea* infecting raspberry fruit (*Rubus idaeus*). Homobotcinolide significantly inhibited the growth of yellowed wheat germ tissue^[1].

REFERENCES

[1]. Cutler HG, et al. Homobotcinolide: a biologically active natural homolog of botcinolide from *Botrytis cinerea*. *Biosci Biotechnol Biochem*. 1996 Apr;60(4):656-8.

Caution: Product has not been fully validated for medical applications. For research use only.

Tel: 609-228-6898

Fax: 609-228-5909

E-mail: tech@MedChemExpress.com

Address: 1 Deer Park Dr, Suite Q, Monmouth Junction, NJ 08852, USA