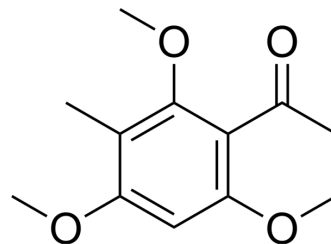


2',4',6'-Trimethoxy-3'-methylacetophenone

Cat. No.:	HY-N12738
CAS No.:	39701-13-8
Molecular Formula:	C ₁₂ H ₁₆ O ₄
Molecular Weight:	224.25
Target:	Others
Pathway:	Others
Storage:	Please store the product under the recommended conditions in the Certificate of Analysis.



BIOLOGICAL ACTIVITY

Description

2',4',6'-Trimethoxy-3'-methylacetophenone (compound 15) is a rosin lactone that can be isolated from *E. portulacoides*^[1].

REFERENCES

[1]. Morgenstern T, Bittner M, Silva M, et al. Diterpenes and phloracetophenones from *Euphorbia portulacoides*[J]. *Phytochemistry*, 1996, 41(4): 1149-1153.

Caution: Product has not been fully validated for medical applications. For research use only.

Tel: 609-228-6898

Fax: 609-228-5909

E-mail: tech@MedChemExpress.com

Address: 1 Deer Park Dr, Suite Q, Monmouth Junction, NJ 08852, USA