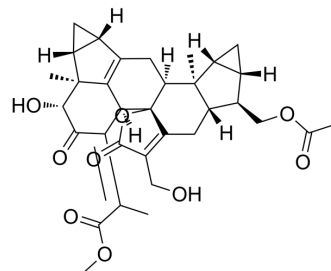


Shizukaol D

Cat. No.:	HY-N1302
CAS No.:	142279-42-3
Molecular Formula:	C ₃₃ H ₃₈ O ₉
Molecular Weight:	578.65
Target:	Apoptosis
Pathway:	Apoptosis
Storage:	Please store the product under the recommended conditions in the Certificate of Analysis.



BIOLOGICAL ACTIVITY

Description

Shizukaol D is a dimeric sesquiterpene isolated from *Chloranthus serratus*. Shizukaol D induces apoptosis and attenuated Wnt signalling^[1].

REFERENCES

[1]. Lisha Tang, et al. Shizukaol D, a Dimeric Sesquiterpene Isolated from *Chloranthus serratus*, Represses the Growth of Human Liver Cancer Cells by Modulating Wnt Signalling Pathway. PLoS One. 2016, 11, 3.

Caution: Product has not been fully validated for medical applications. For research use only.

Tel: 609-228-6898

Fax: 609-228-5909

E-mail: tech@MedChemExpress.com

Address: 1 Deer Park Dr, Suite Q, Monmouth Junction, NJ 08852, USA