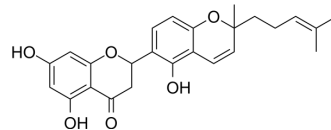


## Sanggenon N

Cat. No.:	HY-N1324
CAS No.:	92280-12-1
Molecular Formula:	C <sub>25</sub> H <sub>26</sub> O <sub>6</sub>
Molecular Weight:	422.47
Target:	Others
Pathway:	Others
Storage:	Please store the product under the recommended conditions in the Certificate of Analysis.



### BIOLOGICAL ACTIVITY

<b>Description</b>	Sanggenon N is an isoprenylated flavonoid that can be isolated from the root bark of Morus alba. Sanggenon N has hepatoprotective activities on t-BHP-induced cell cytotoxicity in HepG2 cells with an EC <sub>50</sub> of 23.45 μM <sup>[1]</sup> .								
<b>In Vitro</b>	<p>Sanggenon N (Compound 8) (0-40 μM; 2 hours) has hepatoprotective effects on t-BHP-induced cytotoxicity in HepG2 cells<sup>[1]</sup>. MCE has not independently confirmed the accuracy of these methods. They are for reference only.</p> <p>Western Blot Analysis<sup>[1]</sup></p> <table border="1"> <tr> <td>Cell Line:</td> <td>t-BHP-induced cytotoxicity in HepG2 cells</td> </tr> <tr> <td>Concentration:</td> <td>10,20,40 μM</td> </tr> <tr> <td>Incubation Time:</td> <td>2 hours</td> </tr> <tr> <td>Result:</td> <td>Exhibited protective effects in a dose-dependent manner with an EC<sub>50</sub> of 23.45 μM.</td> </tr> </table>	Cell Line:	t-BHP-induced cytotoxicity in HepG2 cells	Concentration:	10,20,40 μM	Incubation Time:	2 hours	Result:	Exhibited protective effects in a dose-dependent manner with an EC <sub>50</sub> of 23.45 μM.
Cell Line:	t-BHP-induced cytotoxicity in HepG2 cells								
Concentration:	10,20,40 μM								
Incubation Time:	2 hours								
Result:	Exhibited protective effects in a dose-dependent manner with an EC <sub>50</sub> of 23.45 μM.								

### REFERENCES

[1]. Jung JW, et al. Isoprenylated flavonoids from the root bark of Morus alba and their hepatoprotective and neuroprotective activities. Arch Pharm Res. 2015 Nov;38(11):2066-75.

**Caution: Product has not been fully validated for medical applications. For research use only.**

Tel: 609-228-6898

Fax: 609-228-5909

E-mail: tech@MedChemExpress.com

Address: 1 Deer Park Dr, Suite Q, Monmouth Junction, NJ 08852, USA