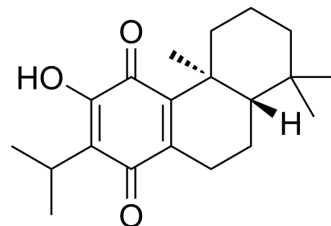


Royleanone

Cat. No.:	HY-N1338
CAS No.:	6812-87-9
Molecular Formula:	C ₂₀ H ₂₈ O ₃
Molecular Weight:	316.43
Target:	mTOR; Akt
Pathway:	PI3K/Akt/mTOR
Storage:	Please store the product under the recommended conditions in the Certificate of Analysis.



BIOLOGICAL ACTIVITY

Description	Royleanone, a diterpenoid isolated from plants, inhibits the proliferation of cancer cells by inducing cell cycle arrest and mitochondria-mediated apoptosis, also inhibits cell migration potential, inhibits mTOR/PI3/AKT signaling pathway in LNCaP prostate cancer cells ^[1] .
IC₅₀ & Target	mTOR/PI3/AKT ^[1]
In Vitro	Royleanone (0-200 μM; 48 h) inhibits the viability of LNCaP cancer cells in a dose-dependent manner, with an IC ₅₀ of 12.5 μM ^[1] . MCE has not independently confirmed the accuracy of these methods. They are for reference only.

REFERENCES

[1]. Wu X, et al. Royleanone diterpenoid exhibits potent anticancer effects in LNCaP human prostate carcinoma cells by inducing mitochondrial mediated apoptosis, cell cycle arrest, suppression of cell migration and downregulation of mTOR/PI3K/AKT signalling pathway. J BUON. 2018 Jul-Aug;23(4):1055-1060.

Caution: Product has not been fully validated for medical applications. For research use only.

Tel: 609-228-6898

Fax: 609-228-5909

E-mail: tech@MedChemExpress.com

Address: 1 Deer Park Dr, Suite Q, Monmouth Junction, NJ 08852, USA