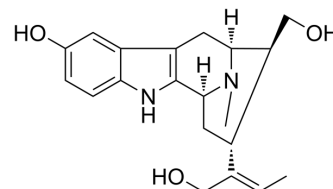


Rauvotetraphylline A

| | |
|--------------------|---|
| Cat. No.: | HY-N1360 |
| CAS No.: | 1422506-49-7 |
| Molecular Formula: | C ₂₀ H ₂₆ N ₂ O ₃ |
| Molecular Weight: | 342.43 |
| Target: | Others |
| Pathway: | Others |
| Storage: | Please store the product under the recommended conditions in the Certificate of Analysis. |



BIOLOGICAL ACTIVITY

Description

Rauvotetraphylline A is an alkaloid that can be isolated from *Rauvolfia tetraphylla*^[1].

REFERENCES

[1]. Yuan Gao, et al. Rauvotetraphyllines A-E, new indole alkaloids from *Rauvolfia tetraphylla*. *Nat. Prod. Bioprospect.* 2, 65–69 (2012).

Caution: Product has not been fully validated for medical applications. For research use only.

Tel: 609-228-6898

Fax: 609-228-5909

E-mail: tech@MedChemExpress.com

Address: 1 Deer Park Dr, Suite Q, Monmouth Junction, NJ 08852, USA