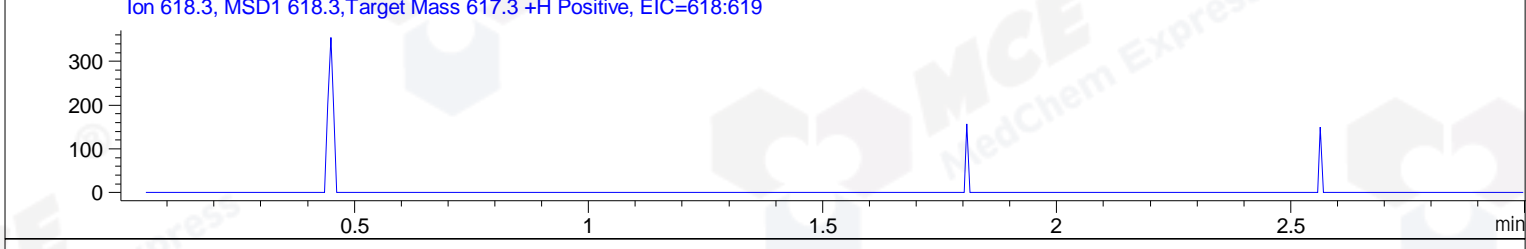
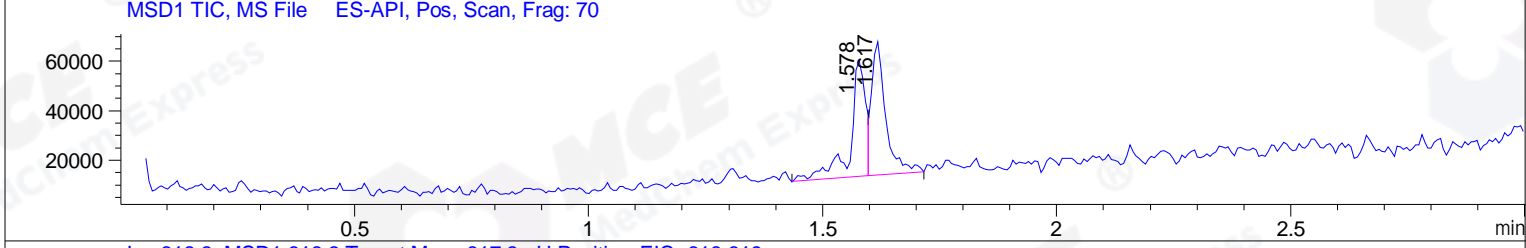
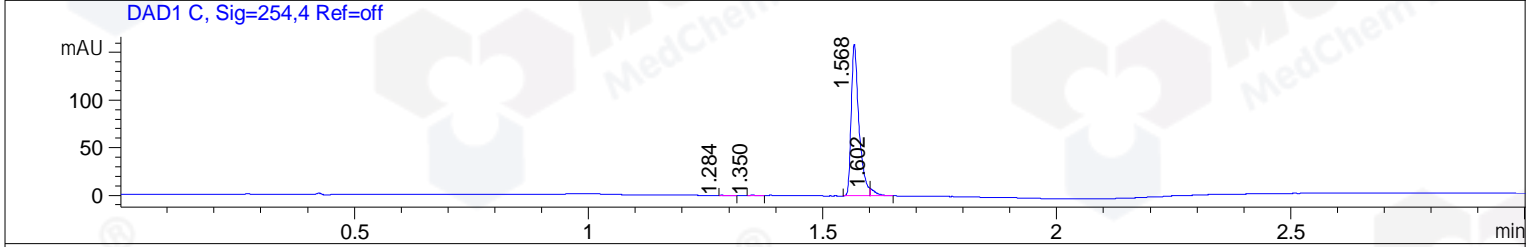
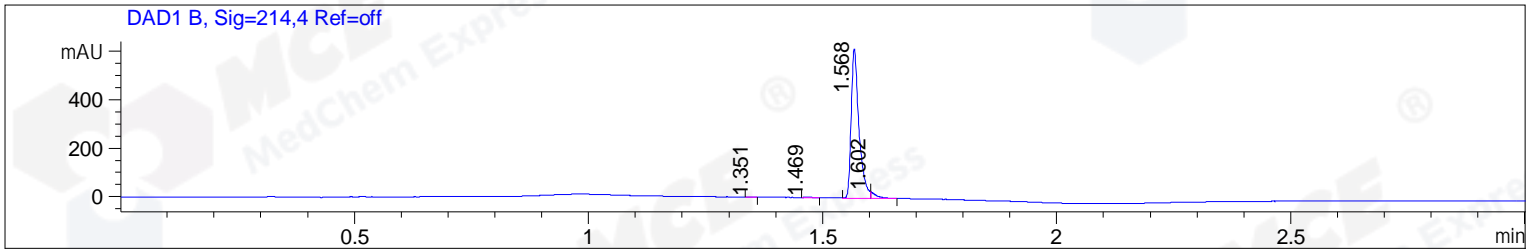


File ..DATA\2019\20190920\713\BIZ2019-909-WMX104.D Tgt Mass (CHM):  
 Injection Date : 20 Sep 19 11:36 am +0800 Seq. Line : 34  
 Sample Name : BIZ2019-909-WMX104 Location : P1-C-03  
 Acq. Operator : ZJ\_1432 Inj : 1  
 Spec. Reported : MS Integration Inj Volume : 0.5 ul  
 Acq. Method : D:\Chem32\1\data\2019\20190920\713\1-POS-3MIN.M  
 Analysis Method : D:\CHEM32\1\DATA\2019\20190920\713\1-POS-3MIN.M  
 Catalog No : HY-N1387 Batch#45938  
 Method Info : Mobile Phase: A: water(0.01%TFA) B:ACN(0.01%TFA)  
 Gradient: 5% to 95%B within 1.3 min  
 Flow Rate :1.8ml/min  
 Column :SunFire C18, 4.6\*50mm,3.5um A-RP-433  
 Oven Temperature : 45



Integration Results for DAD1 B, Sig=214,4 Ref=off

RetTim	Width	Area	Height	Area%	MS (+)
1.35	0.01	0.48	0.67	0.07	140
1.47	0.02	1.51	1.39	0.20	236
1.57	0.02	714.75	618.11	96.56	179
1.60	0.01	23.47	27.59	3.17	372

Integration Results for DAD1 C, Sig=254,4 Ref=off

RetTim	Width	Area	Height	Area%	MS (+)
1.28	0.02	0.35	0.31	0.19	140
1.35	0.01	0.34	0.41	0.18	140
1.57	0.02	184.28	159.61	96.48	179
1.60	0.01	6.02	7.63	3.15	372

Integration Results for MSD1 TIC, MS File

RetTim	Width	Area	Height	Area%	MS (+)
1.58	0.03	105425.67	46806.67	48.07	179

1.62

0.03

113883.00

54167.00

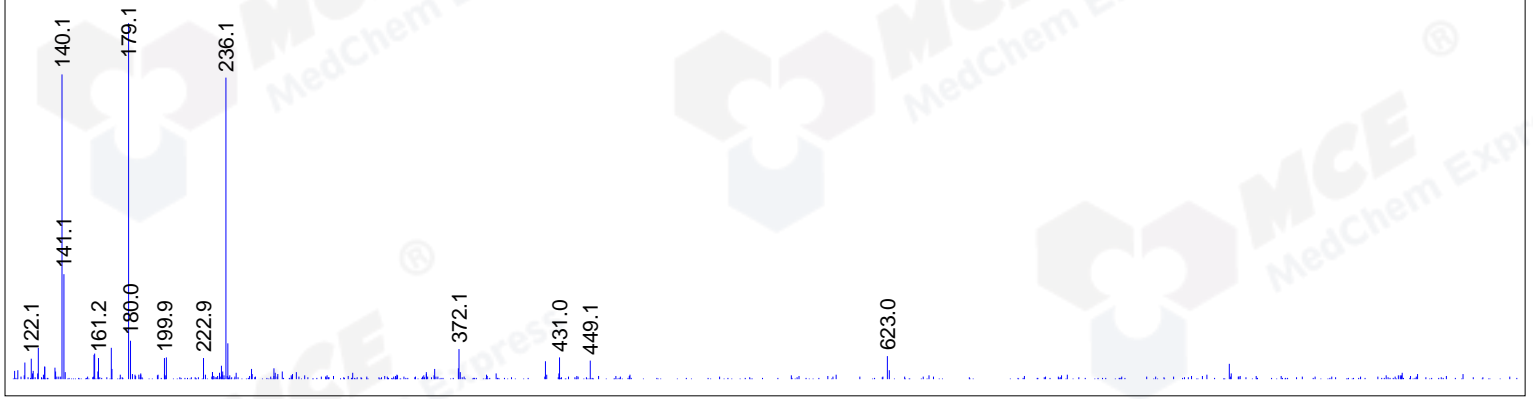
51.93

372

Ret. Time: 1.58

<<<< POSITIVE SPECTRA >>>>

ES-API Positive



Ret. Time: 1.62

ES-API Positive

