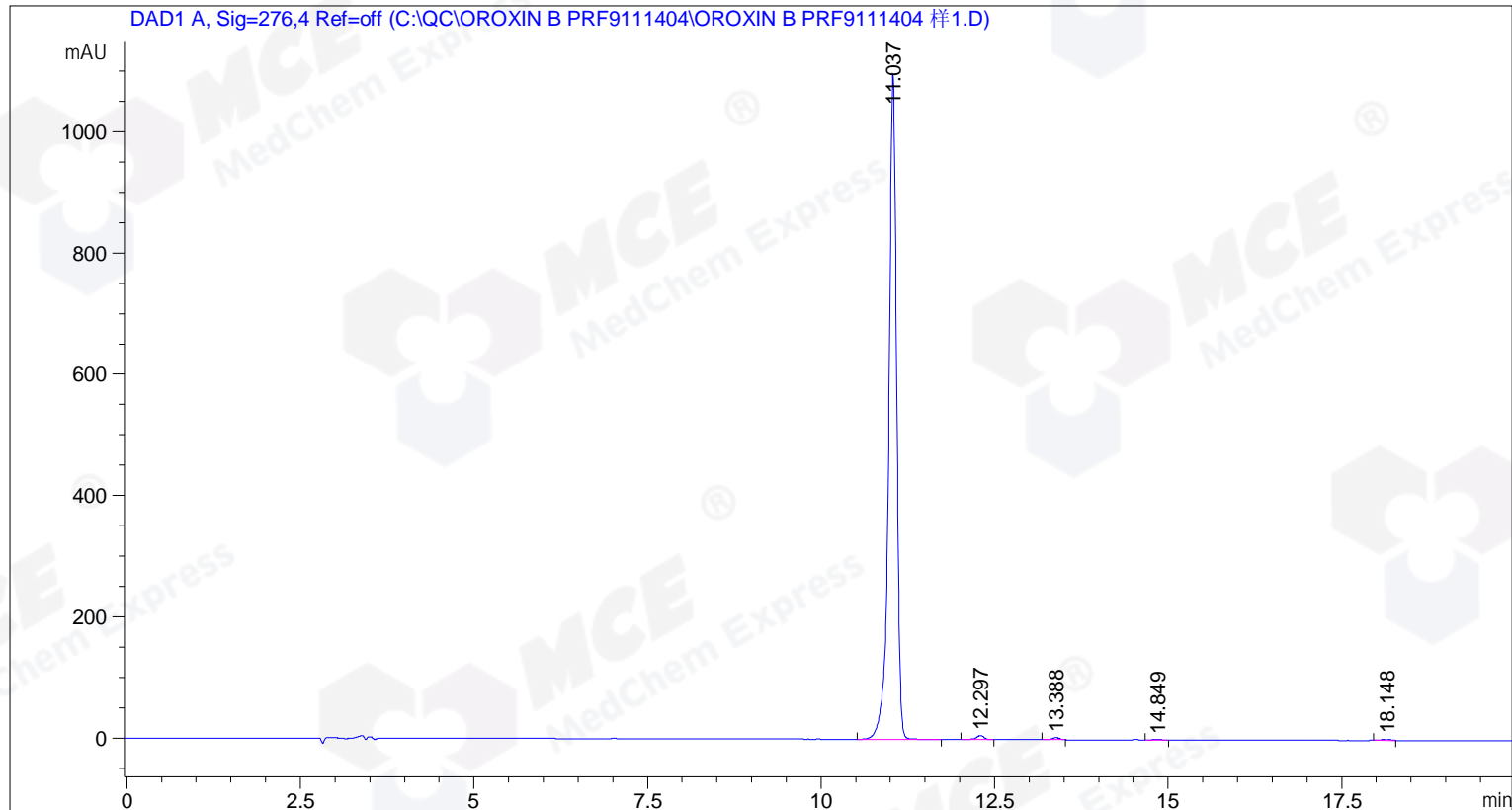


=====
Acq. Operator : -
Acq. Instrument : 1 Location : Vial 62
Injection Date : 2018-11-14 11:25:59 Inj Volume : 10 µl
Acq. Method : C:\QC\OROXIN B.M
Last changed : 2018-11-14 11:19:40 : -
Analysis Method : C:\QC\OROXIN B.M
Last changed : 2018-11-14 14:19:00 : -
()

Additional Info : Peak(s) manually integrated



=====
Area Percent Report
=====

Sorted By : Signal
Multiplier: : 1.0000
Dilution: : 1.0000

Use Multiplier & Dilution Factor with ISTDs

Signal 1: DAD1 A, Sig=276,4 Ref=off

Peak #	RetTime [min]	Type	Width [min]	Area [mAU*s]	Height [mAU]	Area %
1	11.037	BB	0.1194	8587.54883	1096.39453	98.7724
2	12.297	MM R	0.1294	53.31213	6.86469	0.6132
3	13.388	MM R	0.1257	25.88406	3.43323	0.2977
4	14.849	BB	0.1190	8.00533	1.04896	0.0921
5	18.148	MM R	0.1352	19.52868	2.40654	0.2246

Totals : 8694.27903 1110.14795