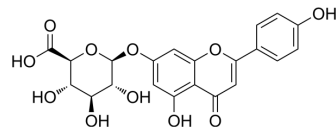


Apigenin-7-glucuronide

Cat. No.:	HY-N1454		
CAS No.:	29741-09-1		
Molecular Formula:	C ₂₁ H ₁₈ O ₁₁		
Molecular Weight:	446.36		
Target:	MMP		
Pathway:	Metabolic Enzyme/Protease		
Storage:	Powder	-20°C	3 years
		4°C	2 years
	In solvent	-80°C	6 months
		-20°C	1 month



SOLVENT & SOLUBILITY

In Vitro	DMSO : 250 mg/mL (560.09 mM; Need ultrasonic)				
		Solvent Concentration	Mass 1 mg	5 mg	10 mg
	Preparing Stock Solutions	1 mM	2.2403 mL	11.2017 mL	22.4034 mL
		5 mM	0.4481 mL	2.2403 mL	4.4807 mL
10 mM		0.2240 mL	1.1202 mL	2.2403 mL	
Please refer to the solubility information to select the appropriate solvent.					
In Vivo	1. Add each solvent one by one: 10% DMSO >> 90% corn oil Solubility: ≥ 2.17 mg/mL (4.86 mM); Clear solution				
	2. Add each solvent one by one: 10% DMSO >> 40% PEG300 >> 5% Tween-80 >> 45% saline Solubility: ≥ 2.08 mg/mL (4.66 mM); Clear solution				
	3. Add each solvent one by one: 10% DMSO >> 90% (20% SBE-β-CD in saline) Solubility: ≥ 2.08 mg/mL (4.66 mM); Clear solution				

BIOLOGICAL ACTIVITY

Description	Apigenin-7-glucuronide could inhibit Matrix Metalloproteinases (MMP) activities, with IC ₅₀ s of 12.87, 22.39, 17.52, 0.27 μM for MMP-3, MMP-8, MMP-9, MMP-13, respectively.			
IC ₅₀ & Target	MMP-3 12.87 μM (IC ₅₀)	MMP-8 22.39 μM (IC ₅₀)	MMP-9 17.52 μM (IC ₅₀)	MMP13 0.27 μM (IC ₅₀)
In Vitro	Apigenin-7-Oglucuronide could inhibit Matrix Metalloproteinases (MMP) activities, with IC ₅₀ s of 12.87, 22.39, 17.52, 0.27 μM			

for MMP-3, MMP-8, MMP-9, MMP-13, respectively [1]. Scutellarin A also inhibits the migrated capacity of ACHN and 786-O cells in a dose-dependent manner. It is also revealed that after treatment with Scutellarin A (30, 60, and 90 μ M) for 24 h, the apoptosis rates in ACHN and 786-O cells are remarkably enhanced dose-dependently when compared to the control groups [2].

MCE has not independently confirmed the accuracy of these methods. They are for reference only.

CUSTOMER VALIDATION

- Food Chem Toxicol. 2020 Dec;146:111843.

See more customer validations on www.MedChemExpress.com

REFERENCES

[1]. Crascì L, et al. Correlating In Vitro Target-Oriented Screening and Docking: Inhibition of Matrix Metalloproteinases Activities by Flavonoids. *Planta Med.* 2017 Jul;83(11):901-911.

[2]. Deng W, et al. Scutellarin inhibits human renal cancer cell proliferation and migration via upregulation of PTEN. *Biomed Pharmacother.* 2018 Nov;107:1505-1513.

Caution: Product has not been fully validated for medical applications. For research use only.

Tel: 609-228-6898

Fax: 609-228-5909

E-mail: tech@MedChemExpress.com

Address: 1 Deer Park Dr, Suite Q, Monmouth Junction, NJ 08852, USA