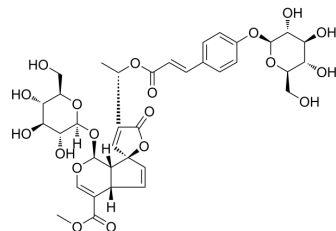


Protoplumericin A

Cat. No.:	HY-N1546
CAS No.:	80396-57-2
Molecular Formula:	C ₃₆ H ₄₂ O ₁₉
Molecular Weight:	778.71
Target:	Others
Pathway:	Others
Storage:	Please store the product under the recommended conditions in the Certificate of Analysis.



BIOLOGICAL ACTIVITY

Description

Protoplumericin A is a bioactive ingredient of *Plumeria obtusa* L. attenuates. Protoplumericin A mitigated lipopolysaccharide (LPS) -induced acute lung injury in mice. Protoplumericin A can be used to study the LPS-induced anti-inflammatory effect [1].

REFERENCES

[1]. Eloutify YT, El-Shiekh RA, Ibrahim KM, Hamed AR, Al-Karmalawy AA, ShokryAA, Ahmed YH, Avula B, Katragunta K, Khan IA, Meselhy MR. Bioactive fraction from *Plumeria obtusa* L. attenuates LPS-induced acute lung injury in mice and inflammation in RAW 264.7 macrophages: LC/QToF-MS and molecular docking. *Inflammopharmacology*. 2023 Apr;31(2):859-875.

Caution: Product has not been fully validated for medical applications. For research use only.

Tel: 609-228-6898

Fax: 609-228-5909

E-mail: tech@MedChemExpress.com

Address: 1 Deer Park Dr, Suite Q, Monmouth Junction, NJ 08852, USA