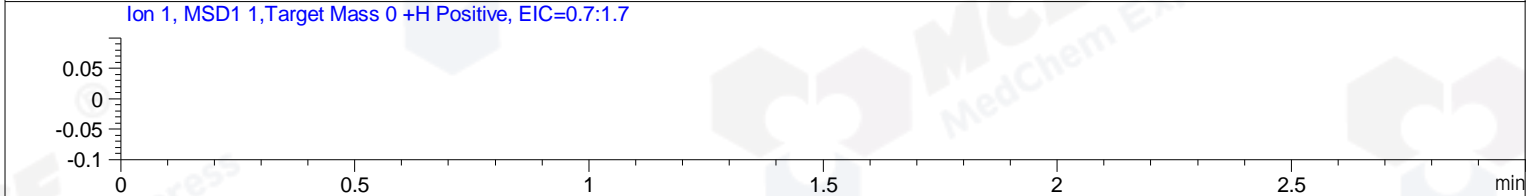
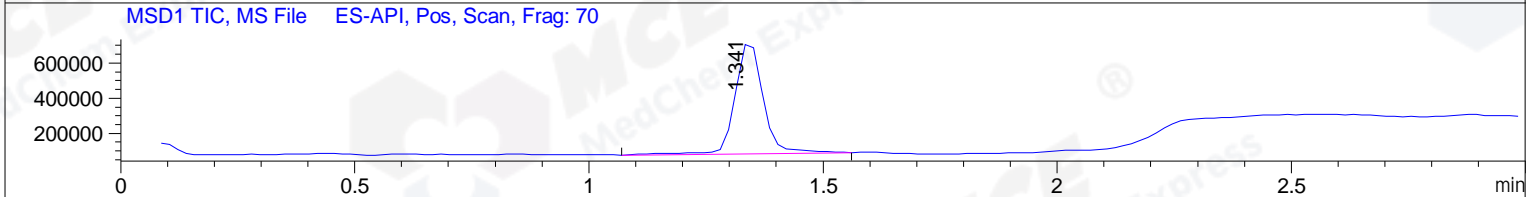
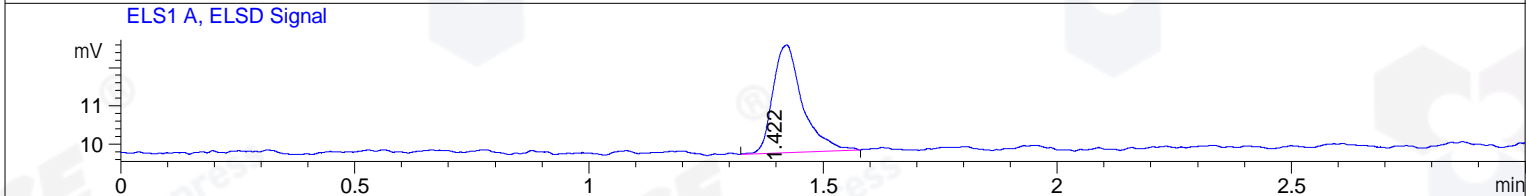
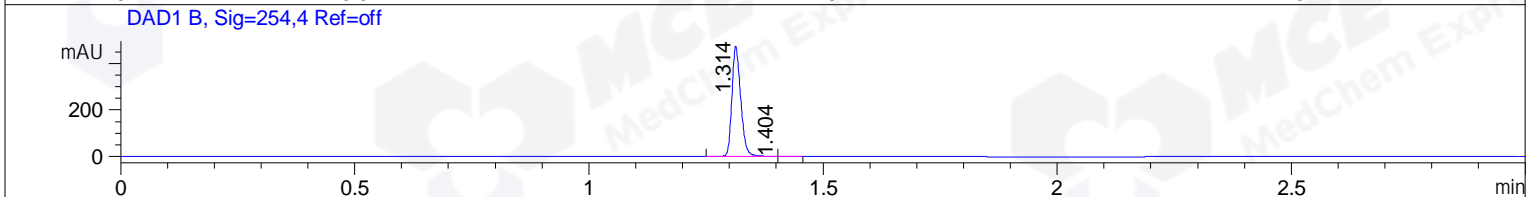
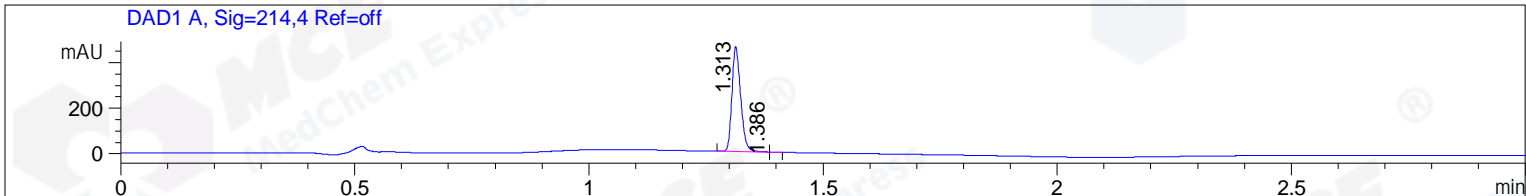


File ..a\2018\20181228\20181228\BIZ2018-D27-WYQ1.D Tgt Mass (CHM):
 Injection Date : 28 Dec 18 10:57 am +0800 Seq. Line : 27
 Sample Name : BIZ2018-D27-WYQ1 Location : P1-C-04
 Acq. Operator : SYSTEM Inj : 1
 Spec. Reported : MS Integration Inj Volume : 1 ul
 Acq. Method : D:\LCMS03\Data\2018\20181228\20181228\1-POS-3MIN.M
 Analysis Method : D:\LCMS03\Data\2018\20181228\20181228\1-POS-3MIN.M
 Catalog No : HY-N1584A Batch#36268
 Method Info : Mobile Phase: A: water(0.01%TFA) B:ACN(0.01%TFA)
 Gradient: 5% to 95%B within 1.3 min
 Flow Rate :1.8ml/min
 Column :SunFire C18, 4.6*50mm,3.5um A-RP-186
 Oven Temperature : 45C



Integration Results for DAD1 A, Sig=214,4 Ref=off

RetTim	Width	Area	Height	Area%	MS (+)
1.31	0.02	597.41	461.01	99.94	416
1.39	0.01	0.34	0.55	0.06	416

Integration Results for DAD1 B, Sig=254,4 Ref=off

RetTim	Width	Area	Height	Area%	MS (+)
1.31	0.02	620.84	475.49	99.96	416
1.40	0.02	0.22	0.20	0.04	122

Integration Results for ELS1 A, ELSD Signal

RetTim	Width	Area	Height	Area%	MS (+)
1.42	0.07	12.31	2.81	100.00	416

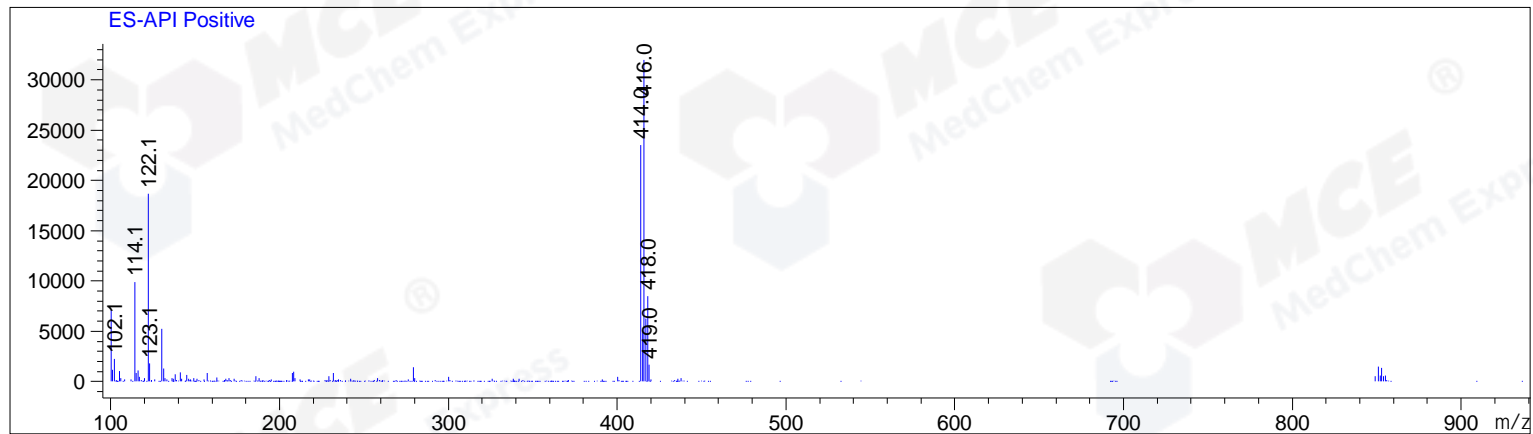
Integration Results for MSD1 TIC, MS File

1.34 0.06 2642200.25 643530.06 100.00 416

RetTim	Width	Area	Height	Area%	MS (+)
--------	-------	------	--------	-------	--------

Ret. Time: 1.34

<<<< POSITIVE SPECTRA >>>>



*** End of Report ***