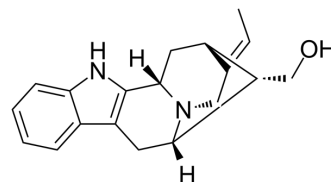


(E)-16-Epi-normacusine B

Cat. No.:	HY-N1598
CAS No.:	126640-98-0
Molecular Formula:	C ₁₉ H ₂₂ N ₂ O
Molecular Weight:	294.39
Target:	Others
Pathway:	Others
Storage:	Please store the product under the recommended conditions in the Certificate of Analysis.



BIOLOGICAL ACTIVITY

Description	(E)-16-Epi-normacusine B is an indole alkaloid compound ^[1] .
-------------	--

REFERENCES

[1]. Kitajima M, et al. Asymmetric Total Synthesis of Sarpagine-Related Indole Alkaloids Hydroxygardnerine, Hydroxygardnutine, Gardnerine, (E)-16-epi-Normacusine B, and Koumine. *Org Lett.* 2016;18(8):1912-1915.

Caution: Product has not been fully validated for medical applications. For research use only.

Tel: 609-228-6898

Fax: 609-228-5909

E-mail: tech@MedChemExpress.com

Address: 1 Deer Park Dr, Suite Q, Monmouth Junction, NJ 08852, USA