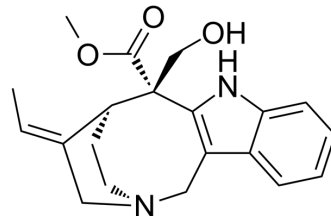


19,20-(E)-Vallesamine

Cat. No.:	HY-N1611
CAS No.:	3368-87-4
Molecular Formula:	C ₂₀ H ₂₄ N ₂ O ₃
Molecular Weight:	340.42
Target:	Others
Pathway:	Others
Storage:	Please store the product under the recommended conditions in the Certificate of Analysis.



BIOLOGICAL ACTIVITY

Description	19,20-(E)-Vallesamine is an indole alkaloid compound isolated from the stems of <i>Ervatamia yunnanensis</i> ^[1] .
-------------	---

REFERENCES

[1]. Xin GenLuo, et al. Alkaloids from stems of *Ervatamia yunnanensis*.

Caution: Product has not been fully validated for medical applications. For research use only.

Tel: 609-228-6898

Fax: 609-228-5909

E-mail: tech@MedChemExpress.com

Address: 1 Deer Park Dr, Suite Q, Monmouth Junction, NJ 08852, USA