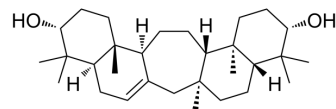


## 21-epi-Serratenediol

|                    |   |
|--------------------|---|
| Cat. No.:          | HY-N1690  |
| CAS No.:           | 1449-06-5   |
| Molecular Formula: | C <sub>30</sub> H <sub>50</sub> O <sub>2</sub>  |
| Molecular Weight:  | 442.72  |
| Target:            | Others  |
| Pathway:           | Others  |
| Storage:           | Please store the product under the recommended conditions in the Certificate of Analysis. |



### BIOLOGICAL ACTIVITY

|             |   |
|-------------|---|
| Description | 21-epi-Serratenediol is a neutral triterpene isolated from Sitka spruce bark <sup>[1]</sup> . |
|-------------|---|

### REFERENCES

[1]. J P Kutney, I H Rogers. The neutral triterpenes of the bark of *Picea sitchensis* (Sitka spruce). *Tetrahedron*. 1969 Sep;25(17):3731-51.

**Caution: Product has not been fully validated for medical applications. For research use only.**

Tel: 609-228-6898

Fax: 609-228-5909

E-mail: tech@MedChemExpress.com

Address: 1 Deer Park Dr, Suite Q, Monmouth Junction, NJ 08852, USA