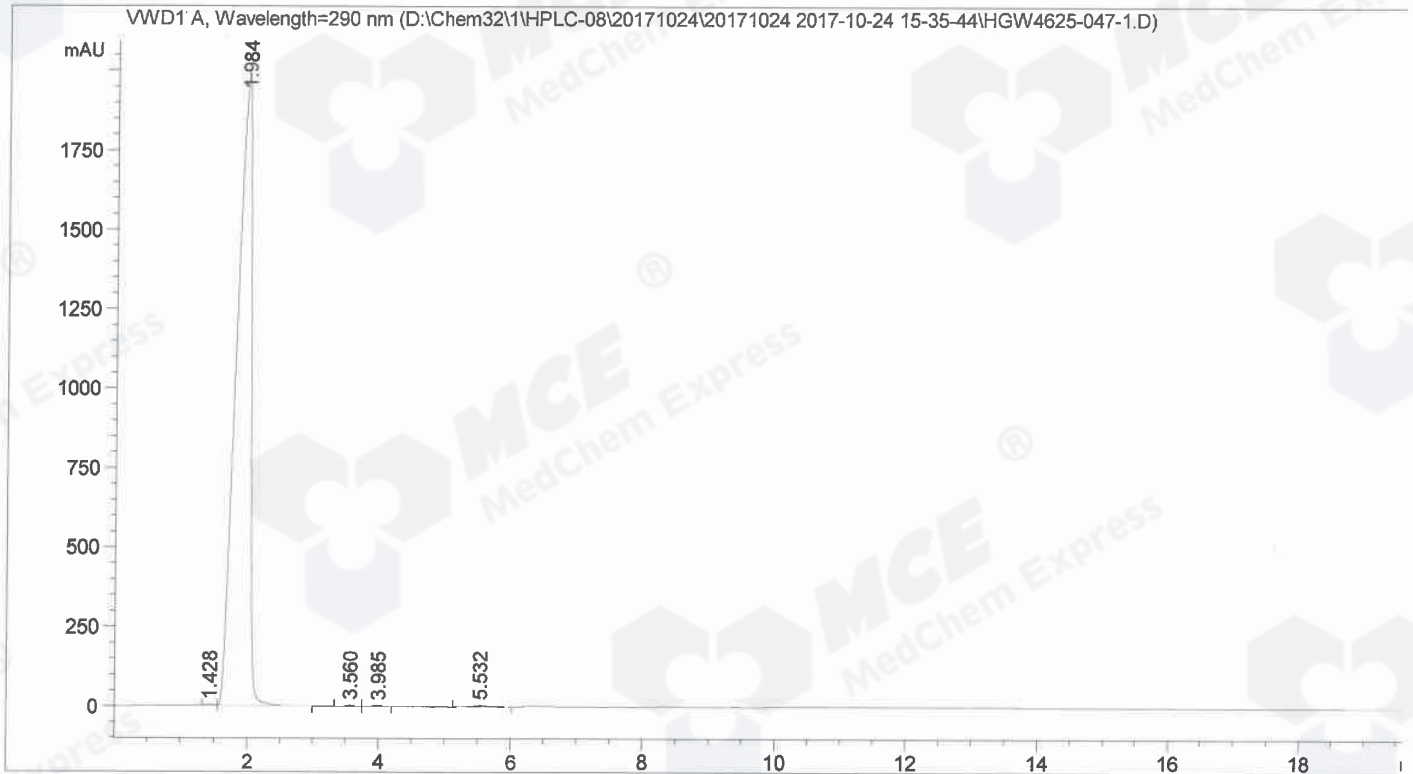


Catalog No : HY-N1780

```

=====
Acq. Operator   : zjl                               Seq. Line :    1
Acq. Instrument : HPLC-08                           Location  :   13
Injection Date  : 10/24/2017 3:47:06 PM             Inj       :    1
                                                    Inj Volume: 5.000 µl
Acq. Method     : D:\Chem32\1\HPLC-08\20171024\20171024 2017-10-24 15-35-44\HY-388_21-
                20170928,D,C1.M
Last changed    : 10/24/2017 3:40:02 PM by zjl
                (modified after loading)
Analysis Method : D:\Chem32\1\HPLC-08\20171024\20171024 2017-10-24 15-35-44\HY-388_21-
                20170928,D,C1.M (Sequence Method)
Last changed    : 10/24/2017 5:17:34 PM by zjl
    
```

Additional Info : Peak(s) manually integrated



Area Percent Report

```

Sorted By      : Signal
Multiplier     : 1.0000
Dilution      : 1.0000
Use Multiplier & Dilution Factor with ISTDs
    
```

Signal 1: VWD1 A, Wavelength=290 nm

Peak #	RetTime [min]	Type	Width [min]	Area [mAU*s]	Height [mAU]	Area %
1	1.428	MF	0.1664	28.87910	2.89301	0.0941
2	1.984	FM	0.2551	3.05499e4	1995.56116	99.5075
3	3.560	BV	0.1309	31.41869	3.59845	0.1023

Sample Name: HGW4625-047-1

Peak #	RetTime [min]	Type	Width [min]	Area [mAU*s]	Height [mAU]	Area %
4	3.985	MF	0.2059	36.47335	2.95260	0.1188
5	5.532	BB	0.2129	54.41989	3.87316	0.1773

Totals : 3.07011e4 2008.87838

=====  
\*\*\* End of Report \*\*\*