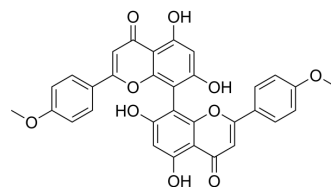


## 4',4'''-Di-O-methylcupressuflavone

Cat. No.:	HY-N1877
CAS No.:	74336-91-7
Molecular Formula:	C <sub>32</sub> H <sub>22</sub> O <sub>10</sub>
Molecular Weight:	566.51
Target:	Others
Pathway:	Others
Storage:	Please store the product under the recommended conditions in the Certificate of Analysis.



### BIOLOGICAL ACTIVITY

#### Description

4',4'''-Di-O-methylcupressuflavone can be isolated from *Phyllanthus sellmianus*<sup>[1]</sup>.

### REFERENCES

[1]. O. Hnatyszyn, et al. A Biflavonoid from *Phyllanthus sellowianus*. *J. Nat. Prod.* 1987, 50, 6.

**Caution: Product has not been fully validated for medical applications. For research use only.**

Tel: 609-228-6898

Fax: 609-228-5909

E-mail: tech@MedChemExpress.com

Address: 1 Deer Park Dr, Suite Q, Monmouth Junction, NJ 08852, USA