

File ..1\DATA\2020\20200509\950\BIZ2020-508-SCH4.D Tgt Mass (CHM):

Injection Date : 9 May 20 9:10 am +0800 Seq. Line : 6

Sample Name : BIZ2020-508-SCH4 Location : PL-C-04

Acq. Operator : ZJ_1432 Inj : 1

Spec. Reported : MS Integration Inj Volume : 2 ul

Acq. Method : D:\Chem32\1\data\2020\20200509\950\1-POS-3MIN.M

Analysis Method : D:\CHEM32\1\DATA\2020\20200509\950\1-POS-3MIN.M

Catalog No : HY-N1940

Method Info : Mobile Phase: A: water(0.01%TFA) B:ACN(0.01%TFA)

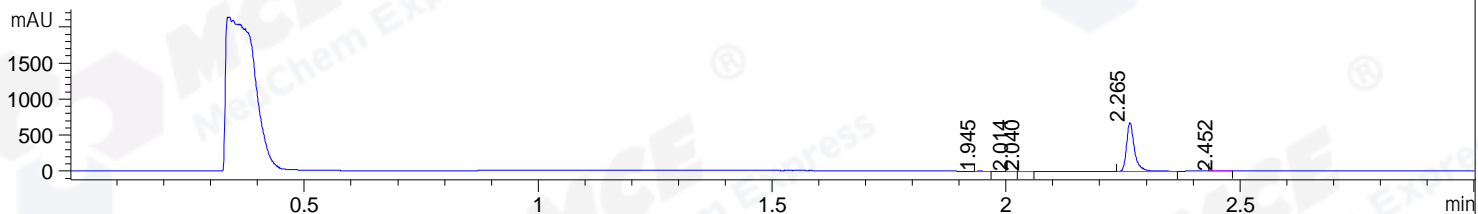
Gradient: 5% to 95%B within 1.3 min

Flow Rate :1.8ml/min

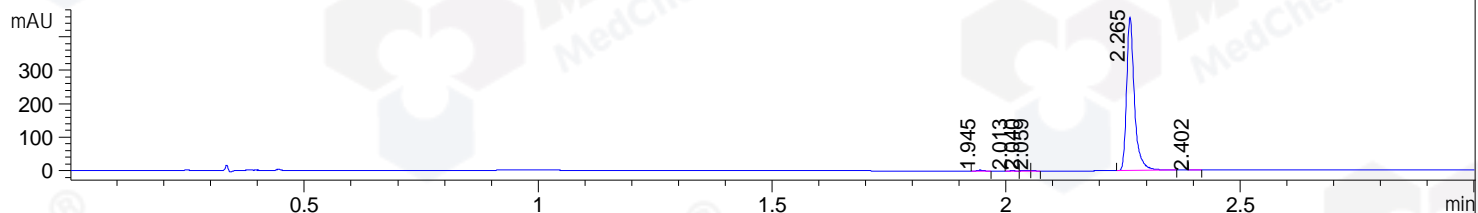
Column :SunFire C18, 4.6*50mm,3.5um A-RP-607

Oven Temperature : 45

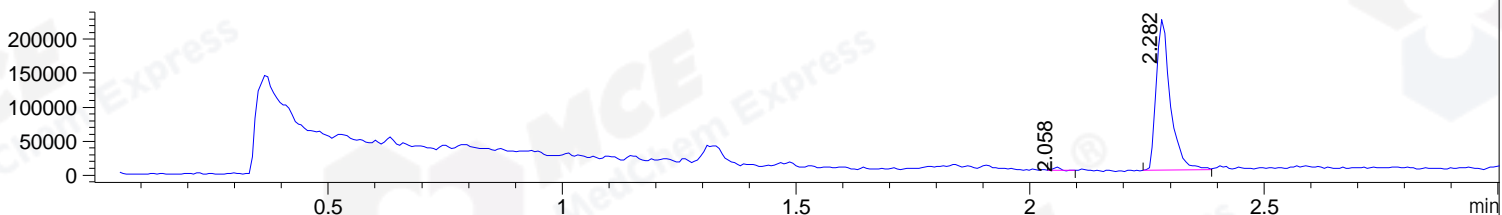
DAD1 B, Sig=214,4 Ref=off



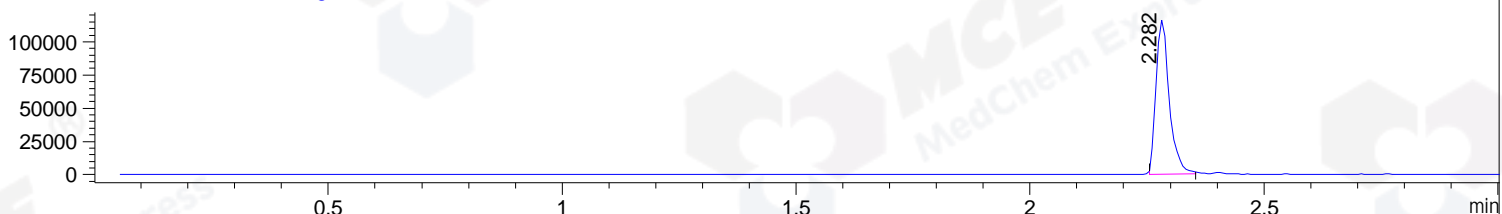
DAD1 C, Sig=254,4 Ref=off



MSD1 TIC, MS File ES-API, Pos, Scan, Frag: 70



Ion 369, MSD1 369, Target Mass 368 +H Positive, EIC=368.7:369.7



Integration Results for DAD1 B, Sig=214,4 Ref=off

RetTim	Width	Area	Height	Area%	MS (+)
1.94	0.02	2.98	3.26	0.37	157
2.01	0.01	1.30	1.90	0.16	157
2.04	0.01	3.09	3.67	0.38	157
2.26	0.02	793.71	678.34	98.43	369
2.45	0.02	5.30	4.51	0.66	157

Integration Results for DAD1 C, Sig=254,4 Ref=off

RetTim	Width	Area	Height	Area%	MS (+)
1.94	0.02	2.75	2.88	0.51	157
2.01	0.01	1.43	1.59	0.26	157
2.04	0.02	2.59	2.81	0.48	157
2.06	0.01	1.06	1.48	0.20	157
2.27	0.02	532.50	458.55	98.47	369
2.40	0.02	0.45	0.39	0.08	157

Integration Results for MSD1 TIC, MS File

2.06	0.01	2979.33	4154.74	0.64	157
2.28	0.03	466055.44	222822.55	99.36	369

RetTim	Width	Area	Height	Area%	MS (+)
--------	-------	------	--------	-------	--------

Ret. Time: 2.06

<<<< POSITIVE SPECTRA >>>>

ES-API Positive



Ret. Time: 2.28

ES-API Positive

