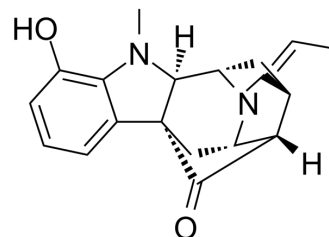


Mitoridine

Cat. No.:	HY-N1948
CAS No.:	3911-19-1
Molecular Formula:	C ₂₀ H ₂₂ N ₂ O ₂
Molecular Weight:	322.4
Target:	Others
Pathway:	Others
Storage:	-20°C, protect from light * In solvent : -80°C, 6 months; -20°C, 1 month (protect from light)



SOLVENT & SOLUBILITY

In Vitro	DMSO : 20 mg/mL (62.03 mM); ultrasonic and warming and heat to 60°C					
	Preparing Stock Solutions	Solvent Concentration	Mass			
			1 mg	5 mg	10 mg	
			1 mM	3.1017 mL	15.5087 mL	31.0174 mL
			5 mM	0.6203 mL	3.1017 mL	6.2035 mL
10 mM	0.3102 mL	1.5509 mL	3.1017 mL			
Please refer to the solubility information to select the appropriate solvent.						
In Vivo	1. Add each solvent one by one: 10% DMSO >> 90% corn oil Solubility: ≥ 2 mg/mL (6.20 mM); Clear solution					

BIOLOGICAL ACTIVITY

Description	Mitoridine is an indole alkaloid compound isolated from the stem bark of <i>Rauwolfia cumminsii</i> Stapf ^[1] .
-------------	--

REFERENCES

[1]. Iwu MM, et al. Na-demethyl-purpeline and Na-demethyl-dihydropurpeline, new alkaloids from *Rauwolfia cumminsii* Stapf. *Experientia*. 1977;33(10):1268.

Caution: Product has not been fully validated for medical applications. For research use only.

Tel: 609-228-6898

Fax: 609-228-5909

E-mail: tech@MedChemExpress.com

Address: 1 Deer Park Dr, Suite Q, Monmouth Junction, NJ 08852, USA