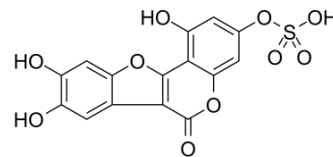


## Demethylwedelolactone Sulfate

Cat. No.:	HY-N2028A
CAS No.:	1318240-80-0
Molecular Formula:	C <sub>15</sub> H <sub>8</sub> O <sub>10</sub> S
Molecular Weight:	380.28
Target:	Others
Pathway:	Others
Storage:	Please store the product under the recommended conditions in the COA.



### BIOLOGICAL ACTIVITY

#### Description

Demethylwedelolactone Sulfate (Demethylwedelolactone 3-sulfate) is a coumestan isolated from *Eclipta prostrata* L. [1].

### REFERENCES

[1]. Chao-Feng Zhang, et al. Sulphur compounds from the aerial parts of *Eclipta prostrata*. *Biochemical Systematics and Ecology*. (2010);38(6):1253–1256.

**Caution: Product has not been fully validated for medical applications. For research use only.**

Tel: 609-228-6898

Fax: 609-228-5909

E-mail: tech@MedChemExpress.com

Address: 1 Deer Park Dr, Suite Q, Monmouth Junction, NJ 08852, USA