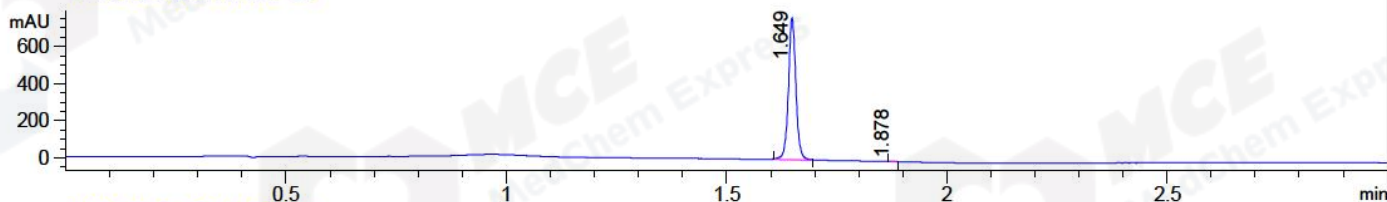


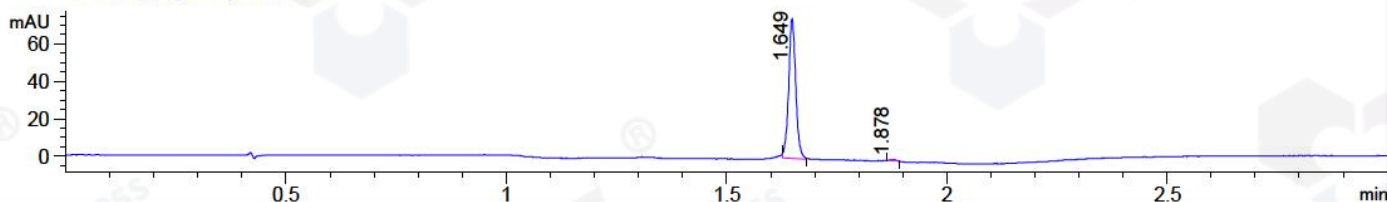
File ..1\DATA\2018\20181126\509\BIZ2018-N26-WYQ9.D Tgt Mass (CHM):

Injection Date : 26 Nov 18 7:06 pm +0800 Seq. Line : 15
 Sample Name : BIZ2018-N26-WYQ9 Location : P2-A-09
 Acq. Operator : LQ_1052 Inj : 1
 Spec. Reported : MS Integration Inj Volume : 1 ul
 Acq. Method : D:\Chem32\1\data\2018\20181126\509\1-POS-3MIN-1.M
 Analysis Method : D:\CHEM32\1\DATA\2018\20181126\509\1-POS-3MIN-1.M
 Catalog No : HY-N2065 Batch#34631 A-RP-314
 Method Info : Mobile Phase: A: water(0.01%TFA) B:ACN(0.01%TFA)
 Gradient: 5% to 95%B within 1.3 min
 Flow Rate :1.8ml/min
 Column :SunFire C18, 4.6*50mm,3.5um A-RP-314
 Oven Temperature : 45□

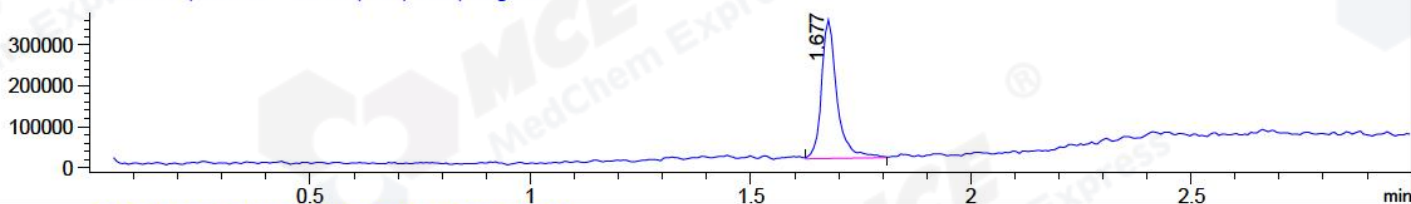
DAD1 B, Sig=214,4 Ref=off



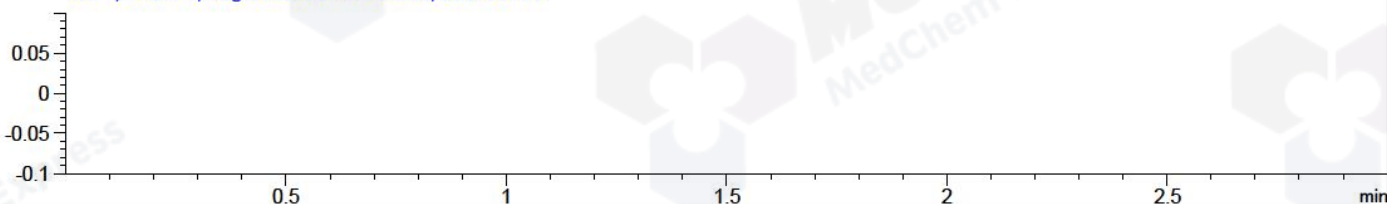
DAD1 C, Sig=254,4 Ref=off



MSD1 TIC, MS File ES-API, Pos, Scan, Frag: 70



Ion 1, MSD1 1, Target Mass 0 +H Positive, EIC=0.7:1.7



Integration Results for DAD1 B, Sig=214,4 Ref=off

RetTim	Width	Area	Height	Area%	MS (+)
1.65	0.02	906.23	765.89	99.92	471
1.88	0.02	0.74	0.73	0.08	141

Integration Results for DAD1 C, Sig=254,4 Ref=off

RetTim	Width	Area	Height	Area%	MS (+)
1.65	0.02	83.61	74.88	99.19	471
1.88	0.02	0.68	0.70	0.81	141

Integration Results for MSD1 TIC, MS File

RetTim	Width	Area	Height	Area%	MS (+)
1.68	0.04	821232.19	339729.50	100.00	471

Ret. Time: 1.68

<<<< POSITIVE SPECTRA >>>>

ES-API Positive

