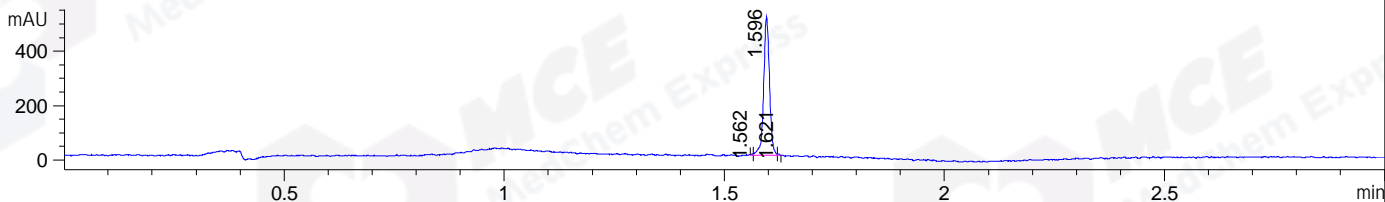
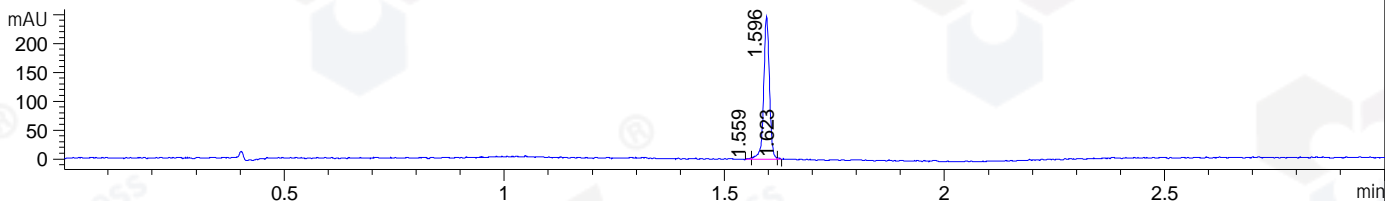


File ..ATA\2020\20200827\1087\BIZ2020-826-SCH12-.D Tgt Mass (CHM):
 Injection Date : 27 Aug 20 5:56 pm +0800 Seq. Line : 46
 Sample Name : BIZ2020-826-SCH12 Location : P1-A-03
 Acq. Operator : zyj_1547 Inj : 1
 Spec. Reported : MS Integration Inj Volume : 2 ul
 Acq. Method : D:\Chem32\1\data\2020\20200827\1087\1-POS-3MIN.M
 Analysis Method : D:\CHEM32\1\DATA\2020\20200827\1087\1-POS-3MIN.M
 Catalog No : HY-N2112
 Method Info : Mobile Phase: A: water(0.01%TFA) B:ACN(0.01%TFA)
 Gradient: 5% to 95%B within 1.3 min
 Flow Rate :1.8ml/min
 Column :SunFire C18, 4.6*50mm,3.5um A-RP-607
 Oven Temperature : 45C

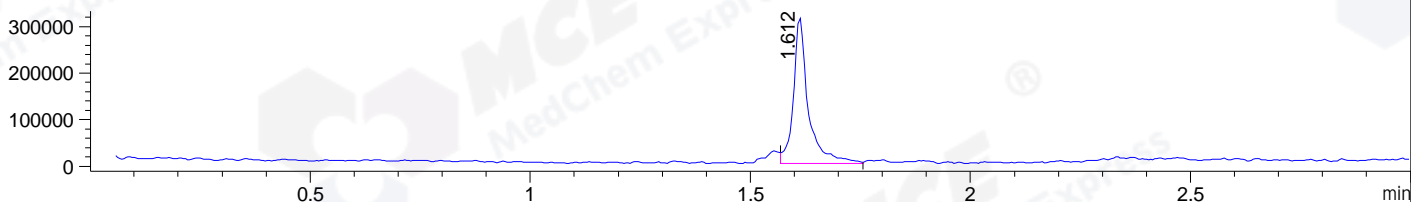
DAD1 B, Sig=214,4 Ref=off



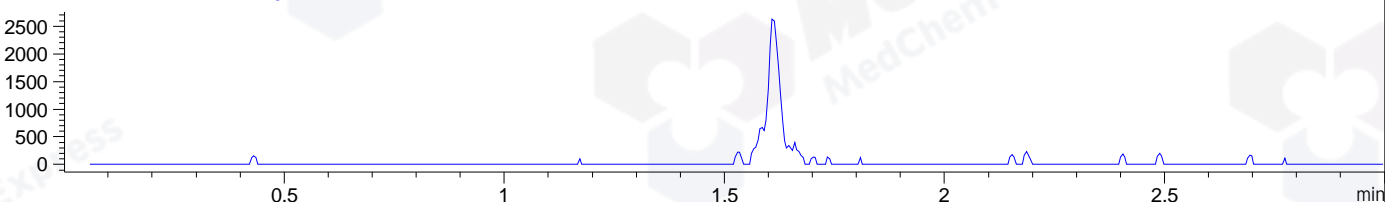
DAD1 C, Sig=254,4 Ref=off



MSD1 TIC, MS File ES-API, Pos, Scan, Frag: 70



Ion 333, MSD1 333, Target Mass 332 +H Positive, EIC=332.7:333.7



Integration Results for DAD1 B, Sig=214,4 Ref=off

RetTim	Width	Area	Height	Area%	MS (+)
1.56	0.00	1.12	3.98	0.24	319
1.60	0.02	465.56	510.14	99.38	315
1.62	0.01	1.80	5.60	0.38	315

Integration Results for DAD1 C, Sig=254,4 Ref=off

RetTim	Width	Area	Height	Area%	MS (+)
1.56	0.01	1.13	2.09	0.50	319
1.60	0.02	225.79	248.20	99.10	315
1.62	0.01	0.92	2.63	0.40	315

Integration Results for MSD1 TIC, MS File

RetTim	Width	Area	Height	Area%	MS (+)
1.61	0.03	740726.81	313792.75	100.00	315

Ret. Time: 1.61

<<<< POSITIVE SPECTRA >>>>

ES-API Positive

