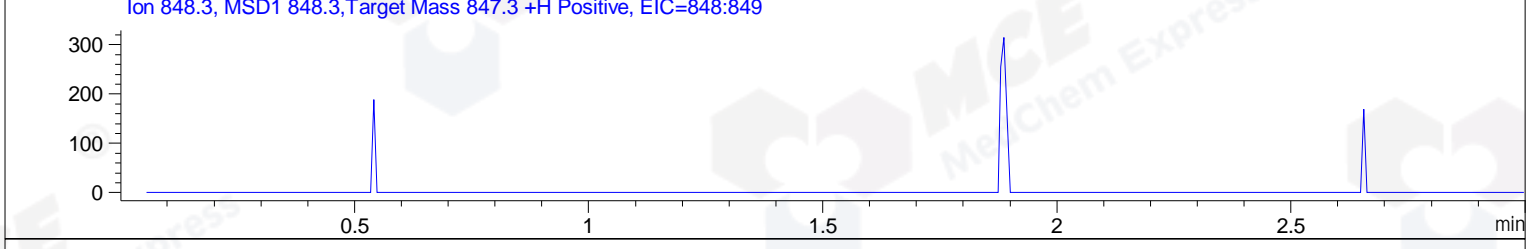
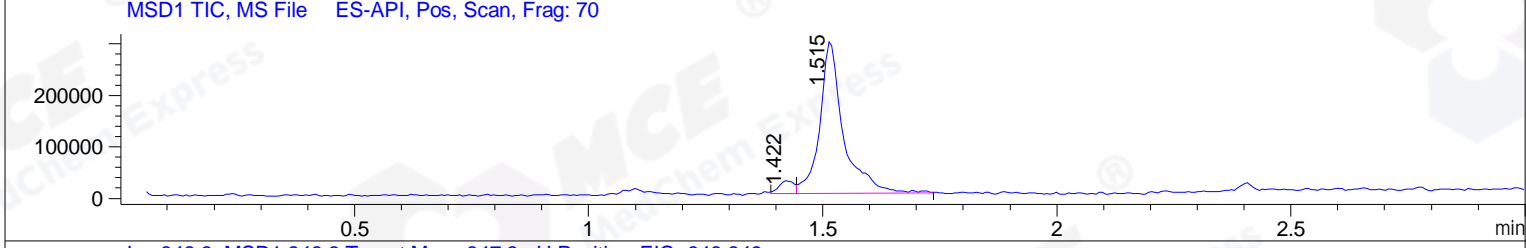
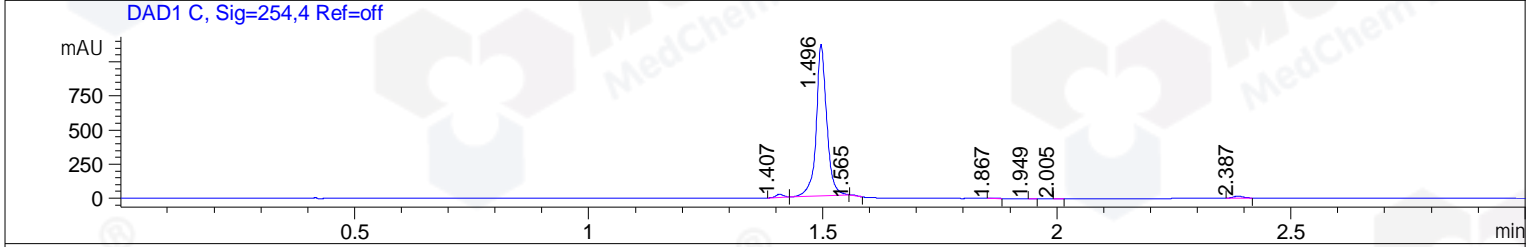
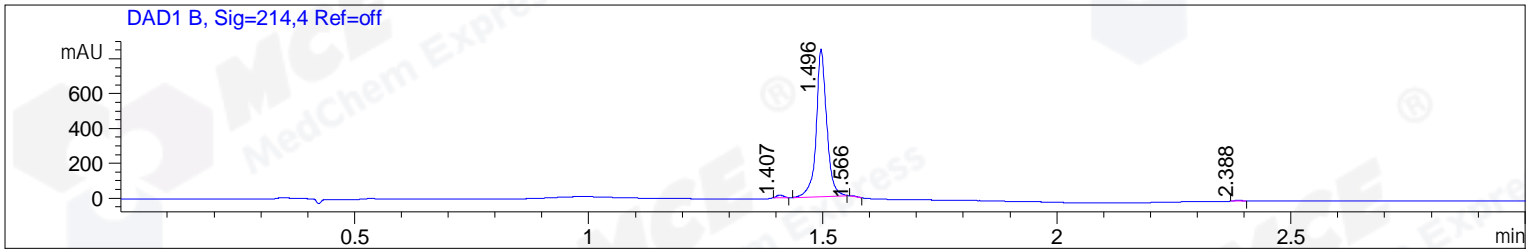


File ..DATA\2019\20190319\558\BIZ2019-318-WYQ13.D Tgt Mass (CHM):
 Injection Date : 19 Mar 19 3:00 pm +0800 Seq. Line : 71
 Sample Name : BIZ2019-318-WYQ13 Location : P2-E-02
 Acq. Operator : LQ_1052 Inj : 1
 Spec. Reported : MS Integration Inj Volume : 2 ul
 Acq. Method : D:\Chem32\1\data\2019\20190319\558\1-POS-3MIN-1.M
 Analysis Method : D:\CHEM32\1\DATA\2019\20190319\558\1-POS-3MIN-1.M
 Catalog No : HY-N2306A Batch#39096
 Method Info : Mobile Phase: A: water(0.01%TFA) B:ACN(0.01%TFA)
 Gradient: 5% to 95%B within 1.3 min
 Flow Rate :1.8ml/min
 Column :SunFire C18, 4.6*50mm,3.5um A-RP-314
 Oven Temperature : 45



Integration Results for DAD1 B, Sig=214,4 Ref=off

RetTim	Width	Area	Height	Area%	MS (+)
1.41	0.02	16.36	16.24	1.22	570
1.50	0.03	1311.86	848.64	98.08	812
1.57	0.02	3.33	3.54	0.25	812
2.39	0.02	5.95	5.06	0.45	142

Integration Results for DAD1 C, Sig=254,4 Ref=off

RetTim	Width	Area	Height	Area%	MS (+)
1.41	0.02	27.70	24.08	1.56	700
1.50	0.03	1718.51	1111.84	96.93	812
1.57	0.01	2.72	3.21	0.15	812
1.87	0.02	1.83	1.78	0.10	142
1.95	0.01	0.58	0.77	0.03	142
2.01	0.02	0.58	0.58	0.03	142
2.39	0.02	20.98	14.84	1.18	142

Integration Results for MSD1 TIC, MS File

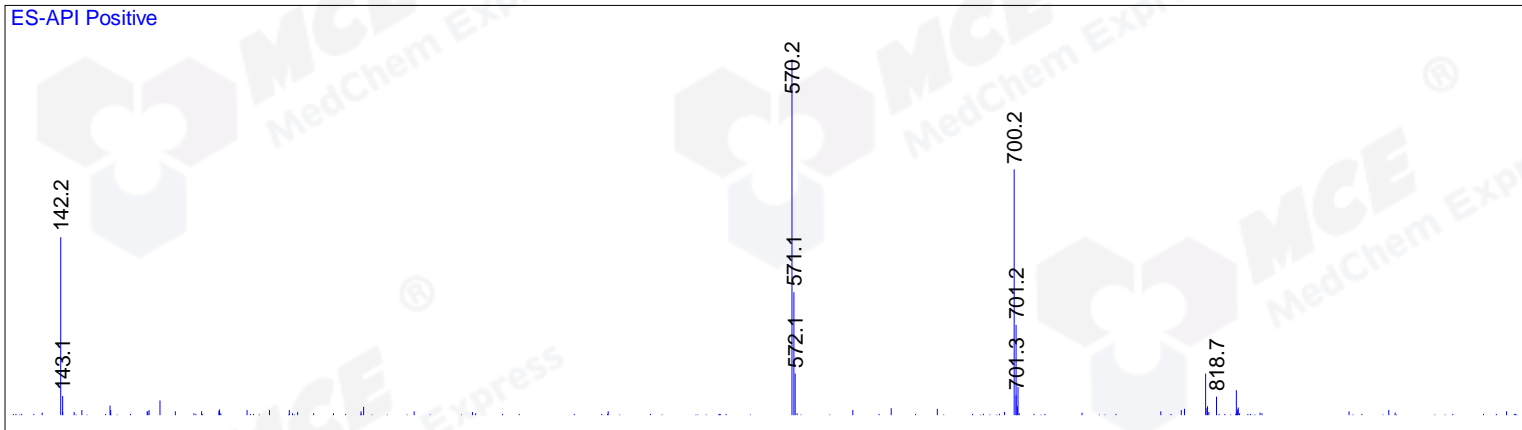
1.42	0.03	57452.45	25318.18	5.21	570
1.52	0.05	1045826.56	297541.13	94.79	812

RetTim	Width	Area	Height	Area%	MS (+)
--------	-------	------	--------	-------	--------

Ret. Time: 1.42

<<<< POSITIVE SPECTRA >>>>

ES-API Positive



Ret. Time: 1.52

ES-API Positive

