

## Physostigmine (hemisulfate)

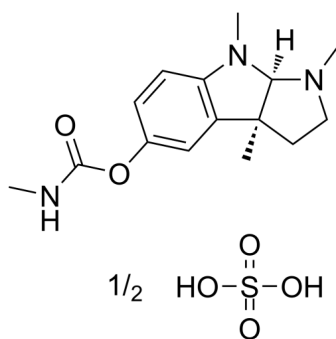
---

Cat. No.: HY-N2320  
Batch No.: 380484  
CAS No.: 64-47-1  
Molecular Formula: C<sub>15</sub>H<sub>21</sub>N<sub>3</sub>O<sub>2</sub>·1/2H<sub>2</sub>O<sub>4</sub>S

### ANALYTICAL DATA

Theoretical: C(54.04%), H(6.95%), N(12.60%)  
Result: C(53.69%), H(7.00%), N(12.47%)

Chemical Structure:



**Caution: Product has not been fully validated for medical applications. For research use only.**

Tel: 609-228-6898

Fax: 609-228-5909

E-mail: [tech@MedChemExpress.com](mailto:tech@MedChemExpress.com)

Address: 1 Deer Park Dr, Suite Q, Monmouth Junction, NJ 08852, USA