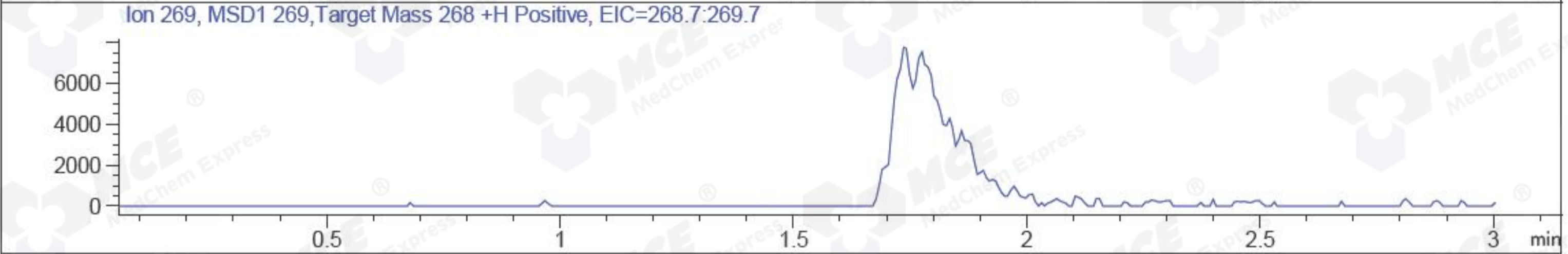
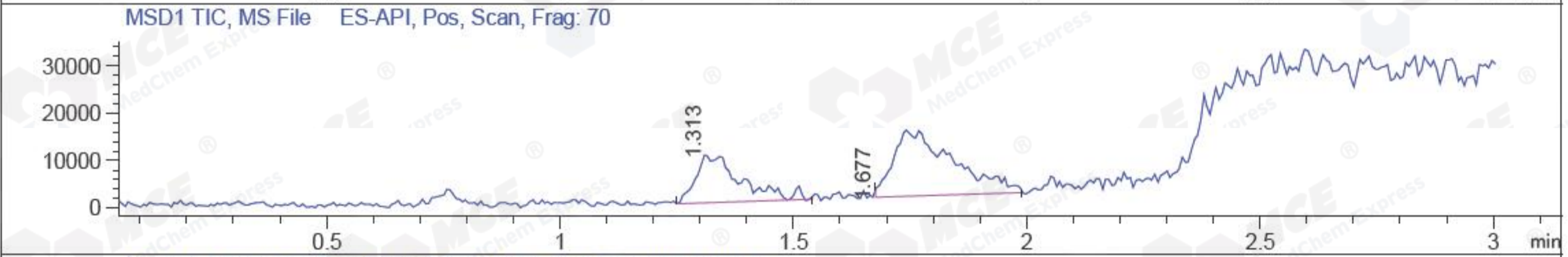
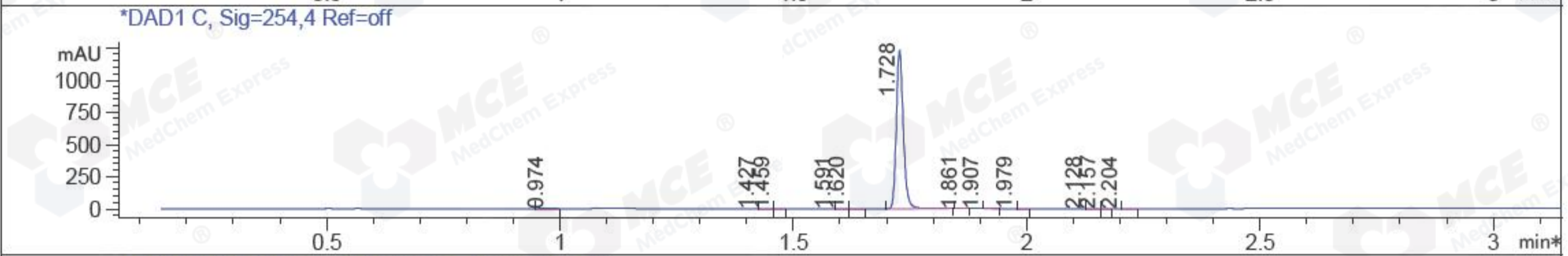
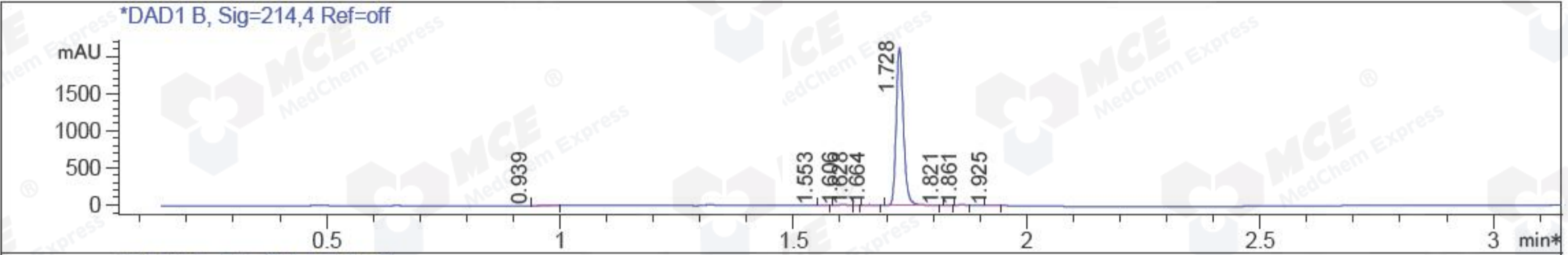


File ..HEM32\1\DATA\20170327\BIZ\BIZ2017-327-WJ9.D Tgt Mass (EZ): 268.00  
 Injection Date : 27 Mar 17 6:29 pm +0800 Seq. Line : 0  
 Sample Name : BIZ2017-327-WJ9 Location : P2-E-02  
 Acq. Operator : GZZ\_718 Inj : 1  
 Spec. Reported : MS Integration Inj Volume : 1 ul  
 Acq. Method : D:\Chem32\1\METHODS\1-POS-3MIN.M  
 Analysis Method : D:\CHEM32\1\METHODS\1-POS-3MIN-PROSRSS.M  
 Catalog No : HY-N2335 Batch#24049 Easy-Access Method: '1-POS-3MIN' 268.00  
 Method Info : Mobile Phase: A: water(0.01%TFA) B:ACN(0.01%TFA)  
 Gradient: 5% to 95%B within 1.3 min  
 Flow Rate :1.8ml/min  
 Column :SunFire C18, 4.6\*50mm,3.5um A-RP-186  
 Oven Temperature : 45C



Integration Results for DAD1 B, Sig=214,4 Ref=off

RetTim	Width	Area	Height	Area%	MS (+)
0.94	0.03	9.59	0.17	0.41	ND
1.55	0.02	1.04	0.23	0.04	ND
1.61	0.02	9.91	9.47	0.43	ND
1.63	0.01	0.88	0.93	0.04	ND
1.66	0.02	4.99	4.88	0.21	ND
1.73	0.02	2291.70	2143.82	98.28	269
1.82	0.01	0.54	0.20	0.02	269
1.86	0.02	9.63	10.56	0.41	269
1.93	0.02	3.49	2.53	0.15	269

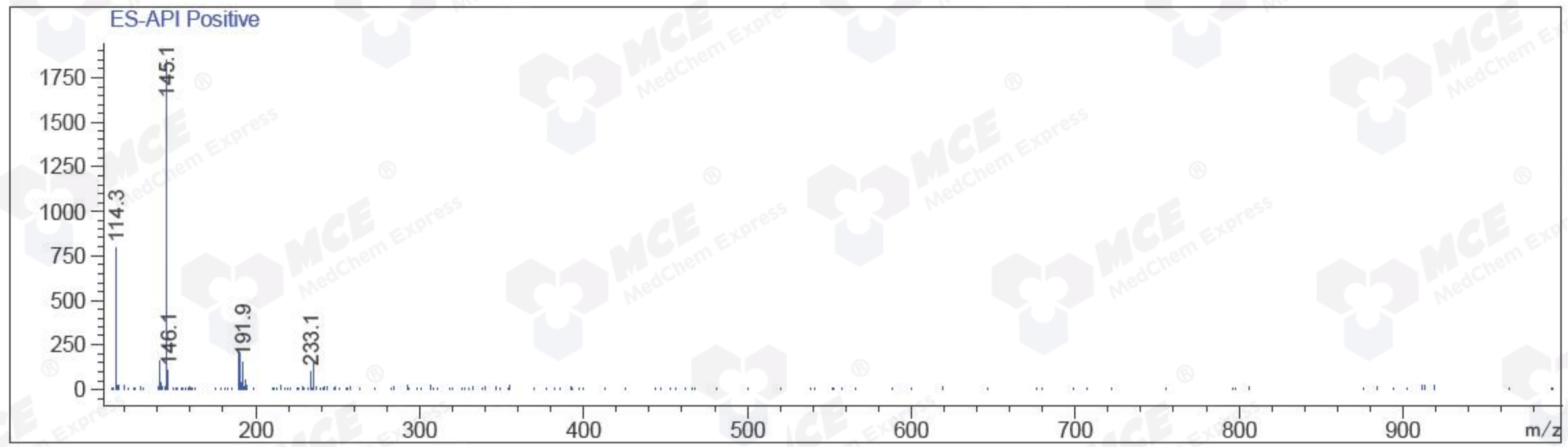
Integration Results for DAD1 C, Sig=254,4 Ref=off

RetTim	Width	Area	Height	Area%	MS (+)
0.97	0.03	1.34	0.82	0.10	ND
1.43	0.02	0.98	0.07	0.07	ND
1.46	0.02	0.52	0.36	0.04	ND
1.59	0.02	0.96	0.16	0.07	ND
1.62	0.02	1.03	0.34	0.08	ND

1.73	0.02	1285.09	1241.47	98.53	269
1.86	0.01	3.09	3.53	0.24	269
1.91	0.02	2.31	0.07	0.18	269
1.98	0.02	0.71	0.08	0.05	ND
2.13	0.02	3.11	0.02	0.24	141
2.16	0.02	2.11	2.16	0.16	141
2.20	0.02	2.99	0.06	0.23	141

Ret. Time: 1.31

<<<< POSITIVE SPECTRA >>>>



Ret. Time: 1.68

