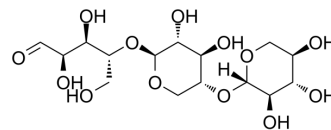


Xylotriose

Cat. No.:	HY-N2469
CAS No.:	47592-59-6
Molecular Formula:	C ₁₅ H ₂₆ O ₁₃
Molecular Weight:	414.36
Target:	Others
Pathway:	Others
Storage:	4°C, protect from light * In solvent : -80°C, 6 months; -20°C, 1 month (protect from light)



SOLVENT & SOLUBILITY

In Vitro

H₂O : 125 mg/mL (301.67 mM; Need ultrasonic)
DMSO : 100 mg/mL (241.34 mM; Need ultrasonic)

Preparing Stock Solutions	Solvent Concentration	Mass		
		1 mg	5 mg	10 mg
	1 mM	2.4134 mL	12.0668 mL	24.1336 mL
	5 mM	0.4827 mL	2.4134 mL	4.8267 mL
	10 mM	0.2413 mL	1.2067 mL	2.4134 mL

Please refer to the solubility information to select the appropriate solvent.

In Vivo

- Add each solvent one by one: PBS
Solubility: 50 mg/mL (120.67 mM); Clear solution; Need ultrasonic
- Add each solvent one by one: 10% DMSO >> 40% PEG300 >> 5% Tween-80 >> 45% saline
Solubility: ≥ 2.5 mg/mL (6.03 mM); Clear solution
- Add each solvent one by one: 10% DMSO >> 90% (20% SBE-β-CD in saline)
Solubility: ≥ 2.5 mg/mL (6.03 mM); Clear solution
- Add each solvent one by one: 10% DMSO >> 90% corn oil
Solubility: ≥ 2.5 mg/mL (6.03 mM); Clear solution

BIOLOGICAL ACTIVITY

Description

Xylotriose is a natural xylooligosaccharide, acts as a bifidogenic factor^[1].

REFERENCES

Caution: Product has not been fully validated for medical applications. For research use only.

Tel: 609-228-6898

Fax: 609-228-5909

E-mail: tech@MedChemExpress.com

Address: 1 Deer Park Dr, Suite Q, Monmouth Junction, NJ 08852, USA