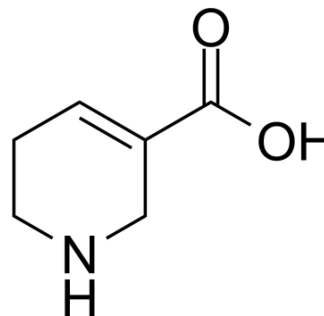


## Guvacine

Cat. No.:	HY-N2482
CAS No.:	498-96-4
Molecular Formula:	C <sub>6</sub> H <sub>9</sub> NO <sub>2</sub>
Molecular Weight:	127.14
Target:	GABA Receptor
Pathway:	Membrane Transporter/Ion Channel; Neuronal Signaling
Storage:	Please store the product under the recommended conditions in the COA.



### BIOLOGICAL ACTIVITY

Description	Guvacine, an alkaloid found in the nut of Areca catechu, is a potent <b>GABA uptake</b> inhibitor. Guvacine inhibits <b>rat GAT-1</b> , <b>rat GAT-2</b> and <b>rat GAT-3</b> with <b>IC<sub>50</sub></b> values of 39 μM, 58 μM and 378 μM, respectively <sup>[1]</sup> .
IC <sub>50</sub> & Target	IC <sub>50</sub> : 39 μM (rat GAT-1), 58 μM (rat GAT-2), 378 μM (rat GAT-3), 14 μM (human GAT-1), 119 μM (human GAT-3) and 1870 μM (human BGT-3) <sup>[1]</sup>

### REFERENCES

[1]. L A Borden, et al. Tiagabine, SK&F 89976-A, CI-966, and NNC-711 are selective for the cloned GABA transporter GAT-1. Eur J Pharmacol. 1994 Oct 14;269(2):219-24.

**Caution: Product has not been fully validated for medical applications. For research use only.**

Tel: 609-228-6898

Fax: 609-228-5909

E-mail: tech@MedChemExpress.com

Address: 1 Deer Park Dr, Suite Q, Monmouth Junction, NJ 08852, USA