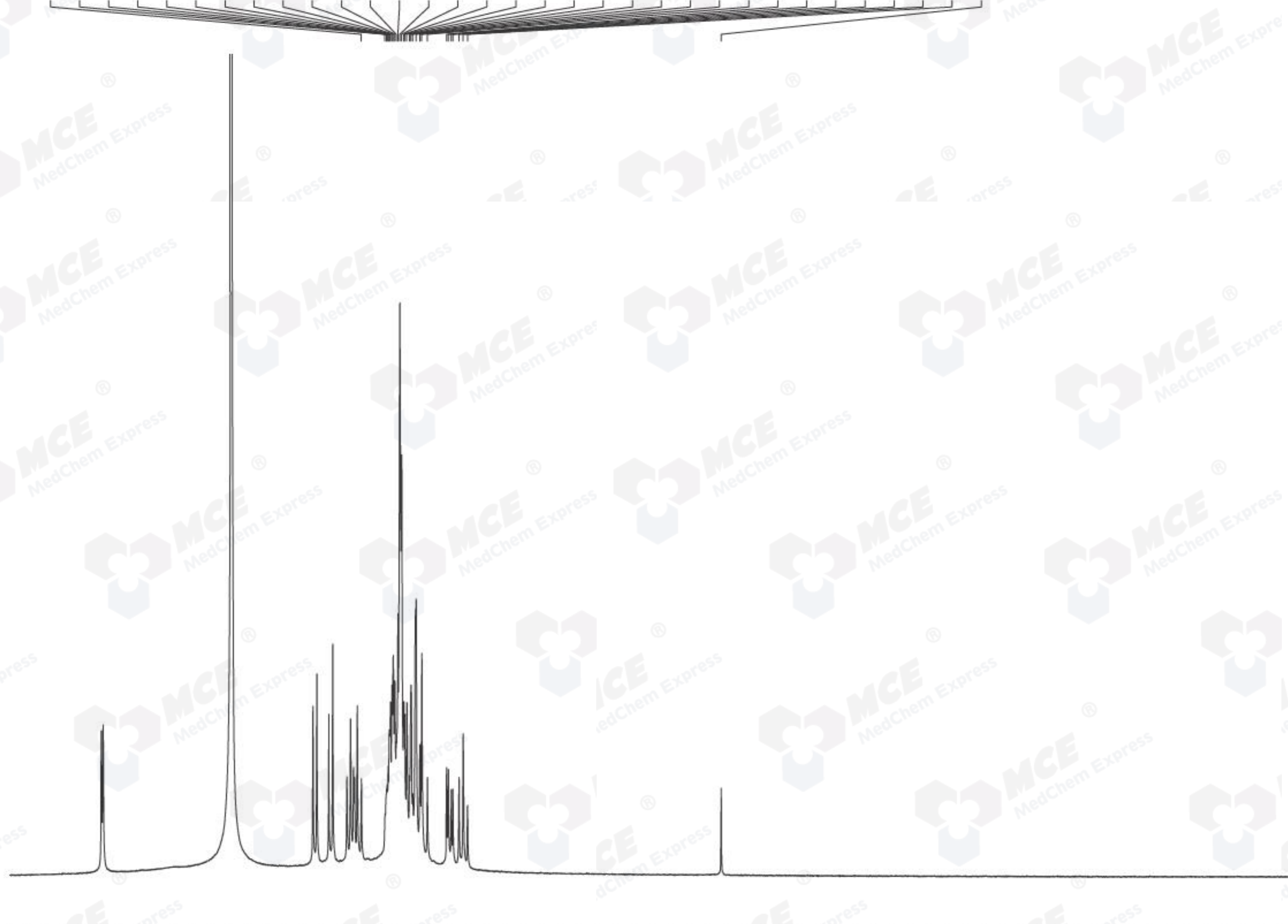


Catalog No:

HY-N2579 Batch#33395



4.090
 3.961
 3.953
 3.949
 3.944
 3.938
 3.936
 3.932
 3.923
 3.916
 3.908
 3.900
 3.891
 3.880
 3.871
 3.859
 3.854
 3.842
 3.828
 3.820
 3.810
 3.792
 3.771
 3.761
 3.730
 3.626
 3.616
 3.601
 3.591
 3.559
 3.536
 3.512
 2.134



Current Data Parameters
 NAME 1-Kestose-1H NMR D2O
 EXPNO 17
 PROCNO 1

F2 - Acquisition Parameters
 Date_ 20180207
 Time 21.20
 INSTRUM spect
 PROBHD 5 mm PABBO BB/
 PULPROG zg30
 TD 65536
 SOLVENT D2O
 NS 13
 DS 2
 SWH 8012.820 Hz
 FIDRES 0.122266 Hz
 AQ 4.0894465 sec
 RG 202.5
 DW 62.400 usec
 DE 6.50 usec
 TE 301.2 K
 D1 1.00000000 sec
 TD0 1

==== CHANNEL f1 =====
 SFO1 400.1324710 MHz
 NUC1 1H
 P1 14.79 usec
 PLW1 11.50800037 W

F2 - Processing parameters
 SI 262144
 SF 400.1299619 MHz
 WDW EM
 SSB 0
 LB 0.30 Hz
 GB 0
 PC 1.00
 SR -38.09 Hz

5.5 5.0 4.5 4.0 3.5 3.0 2.5 2.0 1.5 1.0 0.5 0.0 ppm

1.00
 1.29
 1.36
 2.65
 14.29
 1.21
 1.39

0.24

Catalog No: HY-N2579 Batch#33395



4.353
4.331
4.267
4.245
4.168
4.148
4.132
4.127
4.111
4.090
3.961
3.953
3.949
3.944
3.938
3.936
3.932
3.923
3.916
3.908
3.900
3.891
3.880
3.871
3.859
3.854
3.842
3.828
3.820
3.810
3.792
3.771
3.761
3.730
3.626
3.616
3.601
3.591
3.559
3.536
3.512

Current Data Parameters
NAME 1-Kestose-1H NMR D2O
EXPNO 17
PROCNO 1

F2 - Acquisition Parameters
Date_ 20180207
Time 21.20
INSTRUM spect
PROBHD 5 mm PABBO BB/
PULPROG zg30
TD 65536
SOLVENT D2O
NS 13
DS 2
SWH 8012.820 Hz
FIDRES 0.122266 Hz
AQ 4.0894465 sec
RG 202.5
DW 62.400 usec
DE 6.50 usec
TE 301.2 K
D1 1.00000000 sec
TD0 1

==== CHANNEL f1 =====
SFO1 400.1324710 MHz
NUC1 1H
P1 14.79 usec
PLW1 11.50800037 W

F2 - Processing parameters
SI 262144
SF 400.1299619 MHz
WDW EM
SSB 0
LB 0.30 Hz
GB 0
PC 1.00
SR -38.09 Hz

