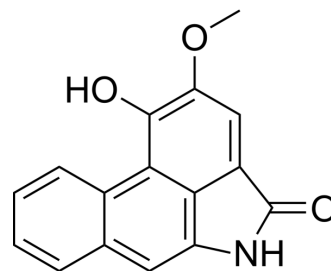


Piperolactam A

| | |
|--------------------|---|
| Cat. No.: | HY-N2894 |
| CAS No.: | 112501-42-5 |
| Molecular Formula: | C ₁₆ H ₁₁ NO ₃ |
| Molecular Weight: | 265.26 |
| Target: | Parasite |
| Pathway: | Anti-infection |
| Storage: | Please store the product under the recommended conditions in the Certificate of Analysis. |



BIOLOGICAL ACTIVITY

| | | |
|-------------------------------------|---|------------|
| Description | Piperolactam A is a natural product that can be isolated from root of Piper betle. Piperolactam A exhibits promising leishmanicidal action against wild type and drug resistant strains of Leishmania donovani ^[1] . | |
| IC₅₀ & Target | Leishmania | Leishmania |
| In Vitro | Piperolactam A shows inhibitory activity against Leishmania donovani wild-type, drug resistant and field isolated axenic amastigote cell lines, with IC ₅₀ values of 60 ± 9.6 (wild-type), 121 ± 18 (SSG resistant), 109 ± 15 (PMM resistant), and 87 ± 12 (field isolate), respectively ^[1] . MCE has not independently confirmed the accuracy of these methods. They are for reference only. | |

REFERENCES

[1]. Bhattacharya P, et al. In Vitro susceptibilities of wild and drug resistant Leishmania donovani amastigotes to piperolactam A loaded hydroxypropyl-β-cyclodextrin nanoparticles. Acta Trop. 2016 Jun;158:97-106.

Caution: Product has not been fully validated for medical applications. For research use only.

Tel: 609-228-6898

Fax: 609-228-5909

E-mail: tech@MedChemExpress.com

Address: 1 Deer Park Dr, Suite Q, Monmouth Junction, NJ 08852, USA