

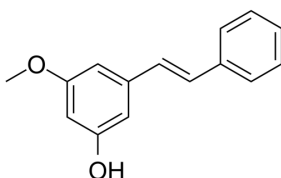
Pinosylvin monomethyl ether

Cat. No.: HY-N3056
CAS No.: 35302-70-6
Batch No.: 149131
Chemical Name: Phenol, 3-methoxy-5-[(1E)-2-phenylethenyl]-

PHYSICAL AND CHEMICAL PROPERTIES

Molecular Formula: C₁₅H₁₄O₂
Molecular Weight: 226.27
Storage: 4°C, protect from light
* In solvent : -80°C, 6 months; -20°C, 1 month (protect from light)

Chemical Structure:



ANALYTICAL DATA

Appearance: White to off-white (Solid)
Purity: ≥99.0%
Conclusion: The product has been tested and complies with the given specifications.

Caution: Product has not been fully validated for medical applications. For research use only.

Tel: 609-228-6898

Fax: 609-228-5909

E-mail: tech@MedChemExpress.com

Address: 1 Deer Park Dr, Suite Q, Monmouth Junction, NJ 08852, USA