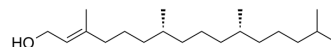


## Phytol

<b>Cat. No.:</b>	HY-N3075		
<b>CAS No.:</b>	150-86-7		
<b>Molecular Formula:</b>	C <sub>20</sub> H <sub>40</sub> O		
<b>Molecular Weight:</b>	296.53		
<b>Target:</b>	Parasite; Bacterial		
<b>Pathway:</b>	Anti-infection		
<b>Storage:</b>	Pure form	-20°C	3 years
		4°C	2 years
	In solvent	-80°C	6 months
		-20°C	1 month



### SOLVENT & SOLUBILITY

#### In Vitro

DMSO : 125 mg/mL (421.54 mM; Need ultrasonic)  
Ethanol : 25 mg/mL (84.31 mM; Need ultrasonic)

Preparing Stock Solutions	Solvent Concentration	Mass		
		1 mg	5 mg	10 mg
	1 mM	3.3723 mL	16.8617 mL	33.7234 mL
	5 mM	0.6745 mL	3.3723 mL	6.7447 mL
	10 mM	0.3372 mL	1.6862 mL	3.3723 mL

Please refer to the solubility information to select the appropriate solvent.

#### In Vivo

- Add each solvent one by one: 10% DMSO >> 40% PEG300 >> 5% Tween-80 >> 45% saline  
Solubility: ≥ 2.25 mg/mL (7.59 mM); Clear solution
- Add each solvent one by one: 10% DMSO >> 90% (20% SBE-β-CD in saline)  
Solubility: ≥ 2.25 mg/mL (7.59 mM); Clear solution
- Add each solvent one by one: 10% DMSO >> 90% corn oil  
Solubility: ≥ 2.25 mg/mL (7.59 mM); Clear solution

### BIOLOGICAL ACTIVITY

#### Description

Phytol ((E)-Phytol), a diterpene alcohol from chlorophyll widely used as a food additive and in medicinal fields, possesses promising antischistosomal properties. Phytol has antinociceptive and antioxidant activities as well as anti-inflammatory and antiallergic effects. Phytol has antimicrobial activity against *Mycobacterium tuberculosis* and *Staphylococcus aureus*<sup>[1]</sup>.

### REFERENCES

---

[1]. de Moraes J, et al. Phytol, a diterpene alcohol from chlorophyll, as a drug against neglected tropical disease *Schistosomiasis mansoni*. PLoS Negl Trop Dis. 2014 Jan 2;8(1):e2617.

---

**Caution: Product has not been fully validated for medical applications. For research use only.**

Tel: 609-228-6898

Fax: 609-228-5909

E-mail: [tech@MedChemExpress.com](mailto:tech@MedChemExpress.com)

Address: 1 Deer Park Dr, Suite Q, Monmouth Junction, NJ 08852, USA