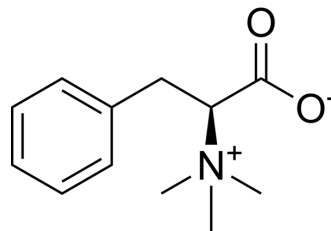


Phenylalanine betaine

Cat. No.:	HY-N3083
CAS No.:	56755-22-7
Molecular Formula:	C ₁₂ H ₁₇ NO ₂
Molecular Weight:	207.27
Target:	Others
Pathway:	Others
Storage:	Please store the product under the recommended conditions in the Certificate of Analysis.



BIOLOGICAL ACTIVITY

Description

Phenylalanine betaine is a betaine that can be isolated from *Antiaris africana*^[1].

REFERENCES

[1]. Okogun J I, et al. Triterpenoids and betaines from the latex and bark of *Antiaris africana*[J]. *Phytochemistry*, 1976, 15(5): 826-827.

Caution: Product has not been fully validated for medical applications. For research use only.

Tel: 609-228-6898

Fax: 609-228-5909

E-mail: tech@MedChemExpress.com

Address: 1 Deer Park Dr, Suite Q, Monmouth Junction, NJ 08852, USA