

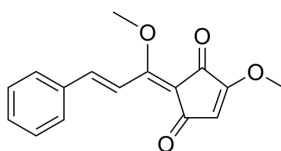
Methylucidone

Cat. No.: HY-N3260
CAS No.: 19956-54-8
Batch No.: 257332
Chemical Name: 4-Cyclopentene-1,3-dione, 4-methoxy-2-[(2E)-1-methoxy-3-phenyl-2-propen-1-ylidene]-

PHYSICAL AND CHEMICAL PROPERTIES

Molecular Formula: C₁₆H₁₄O₄
Molecular Weight: 270.28
Storage: 4°C, protect from light
* In solvent : -80°C, 6 months; -20°C, 1 month (protect from light)

Chemical Structure:



ANALYTICAL DATA

Appearance: Light yellow to yellow (Solid)
Purity: ≥98.0%
Conclusion: The product has been tested and complies with the given specifications.

Caution: Product has not been fully validated for medical applications. For research use only.

Tel: 609-228-6898

Fax: 609-228-5909

E-mail: tech@MedChemExpress.com

Address: 1 Deer Park Dr, Suite Q, Monmouth Junction, NJ 08852, USA