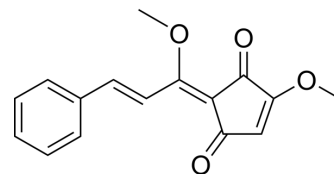


## Methylucidone

Cat. No.:	HY-N3260
CAS No.:	19956-54-8
Molecular Formula:	C <sub>16</sub> H <sub>14</sub> O <sub>4</sub>
Molecular Weight:	270.28
Target:	Reactive Oxygen Species; Keap1-Nrf2; PI3K
Pathway:	Immunology/Inflammation; Metabolic Enzyme/Protease; NF-κB; PI3K/Akt/mTOR
Storage:	4°C, protect from light * In solvent : -80°C, 6 months; -20°C, 1 month (protect from light)



### BIOLOGICAL ACTIVITY

#### Description

Methylucidone is a neuroprotective agent and an antioxidant that can be isolated from *Lindera erythrocarpa* Makino. Methylucidone inhibits the ROS production, and activates antioxidant signaling pathways that include Nrf-2 and PI3K<sup>[1]</sup>.

### REFERENCES

[1]. Jee-Yun Park, et al. Methyl lucidone exhibits neuroprotective effects on glutamate-induced oxidative stress in HT-22 cells via Nrf-2/HO-1 signaling. *Applied Biological Chemistry* volume 62, Article number: 67 (2019).

**Caution: Product has not been fully validated for medical applications. For research use only.**

Tel: 609-228-6898

Fax: 609-228-5909

E-mail: tech@MedChemExpress.com

Address: 1 Deer Park Dr, Suite Q, Monmouth Junction, NJ 08852, USA