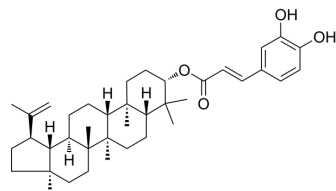


Caffeoxylupeol

Cat. No.:	HY-N3357
CAS No.:	103917-26-6
Molecular Formula:	C ₃₉ H ₅₆ O ₄
Molecular Weight:	588.86
Target:	Others
Pathway:	Others
Storage:	Please store the product under the recommended conditions in the Certificate of Analysis.



BIOLOGICAL ACTIVITY

Description	Caffeoxylupeol is a natural compound with anticancer activity that can be isolated from the Leaves of <i>Dalbergia velutina</i> ^[1] .
In Vitro	Caffeoxylupeol shows potent cytotoxicity against KB cell (human epithelial carcinoma cells) with an IC ₅₀ value of 2.28 μM ^[1] . MCE has not independently confirmed the accuracy of these methods. They are for reference only.

REFERENCES

[1]. Kaennakam, et al. A New Tocopherol Derivative and Cytotoxicity from the Leaves of *Dalbergia velutina* Sutin. *Natural Product Communications* Vol. 13 (12) 2018.

Caution: Product has not been fully validated for medical applications. For research use only.

Tel: 609-228-6898

Fax: 609-228-5909

E-mail: tech@MedChemExpress.com

Address: 1 Deer Park Dr, Suite Q, Monmouth Junction, NJ 08852, USA