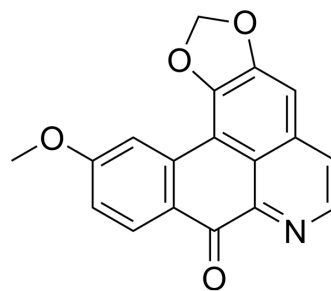


Lauterine

Cat. No.:	HY-N3397
CAS No.:	28200-65-9
Molecular Formula:	C ₁₈ H ₁₁ NO ₄
Molecular Weight:	305.28
Target:	Others
Pathway:	Others
Storage:	Please store the product under the recommended conditions in the Certificate of Analysis.



BIOLOGICAL ACTIVITY

Description

Lauterine is an alkaloid that can be isolated from *Laurelia novae-zelandiae*^[1].

REFERENCES

[1]. Adjaye, A. E., et al. Phytochemical Investigation of *Laurelia novae-zelandiae*. *Journal of Natural Products*, 47(3), 553–554.

Caution: Product has not been fully validated for medical applications. For research use only.

Tel: 609-228-6898

Fax: 609-228-5909

E-mail: tech@MedChemExpress.com

Address: 1 Deer Park Dr, Suite Q, Monmouth Junction, NJ 08852, USA