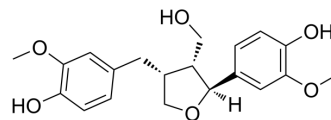


## Lariciresinol

Cat. No.:	HY-N3405
CAS No.:	27003-73-2
Molecular Formula:	C <sub>20</sub> H <sub>24</sub> O <sub>6</sub>
Molecular Weight:	360.4
Target:	Others
Pathway:	Others
Storage:	4°C, protect from light * In solvent : -80°C, 6 months; -20°C, 1 month (protect from light)



### SOLVENT & SOLUBILITY

#### In Vitro

DMSO : 100 mg/mL (277.47 mM; Need ultrasonic)  
Methanol : 25 mg/mL (69.37 mM; Need ultrasonic)

Preparing Stock Solutions	Solvent Concentration	Mass	1 mg	5 mg	10 mg
		1 mM	2.7747 mL	13.8735 mL	27.7469 mL
	5 mM	0.5549 mL	2.7747 mL	5.5494 mL	
	10 mM	0.2775 mL	1.3873 mL	2.7747 mL	

Please refer to the solubility information to select the appropriate solvent.

### BIOLOGICAL ACTIVITY

#### Description

Lariciresinol is a compound isolated from *Arabidopsis thaliana*<sup>[1]</sup>.

### REFERENCES

[1]. Nakatsubo T, et al. Characterization of *Arabidopsis thaliana* pinoresinol reductase, a new type of enzyme involved in lignan biosynthesis. *J Biol Chem.* 2008;283(23):15550-15557.

**Caution: Product has not been fully validated for medical applications. For research use only.**

Tel: 609-228-6898

Fax: 609-228-5909

E-mail: tech@MedChemExpress.com

Address: 1 Deer Park Dr, Suite Q, Monmouth Junction, NJ 08852, USA