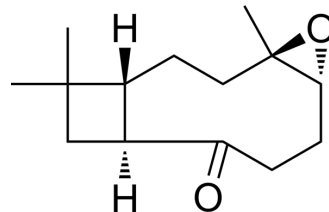


## Kobusone

Cat. No.:	HY-N3419
CAS No.:	24173-71-5
Molecular Formula:	C <sub>14</sub> H <sub>22</sub> O <sub>2</sub>
Molecular Weight:	222.32
Target:	Others
Pathway:	Others
Storage:	Please store the product under the recommended conditions in the Certificate of Analysis.



### BIOLOGICAL ACTIVITY

#### Description

Kobusone is a natural compound isolated from *Aquilaria sinensis*. Kobusone can stimulate islet  $\beta$ -cell replication in vivo, and has the potential to be used in diabetic study<sup>[1][2]</sup>.

### REFERENCES

- [1]. Yang L, et al. Sesquiterpenes and monoterpene from *Aquilaria sinensis*. *Zhongguo Zhong Yao Za Zhi*. 2012;37(13):1973-1976.
- [2]. Choi JW, et al. The small molecule kobusone can stimulate islet  $\beta$ -cell replication in vivo. *J Int Med Res*. 2021;49(7):3000605211032849.

**Caution: Product has not been fully validated for medical applications. For research use only.**

Tel: 609-228-6898

Fax: 609-228-5909

E-mail: tech@MedChemExpress.com

Address: 1 Deer Park Dr, Suite Q, Monmouth Junction, NJ 08852, USA