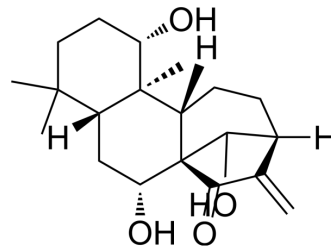


Kamebanin

Cat. No.:	HY-N3428
CAS No.:	39388-57-3
Molecular Formula:	C ₂₀ H ₃₀ O ₄
Molecular Weight:	334.45
Target:	Others
Pathway:	Others
Storage:	Please store the product under the recommended conditions in the Certificate of Analysis.



BIOLOGICAL ACTIVITY

Description

Kamebanin can be isolated from the leaves of *Isodon weisiensis* C. Y. Wu. Kamebanin has anti-proliferative activity and can be used in cancer research^[1].

REFERENCES

[1]. Ding L, et al. Isolation, characterization and crystal structure of cytotoxic ent-kaurane diterpenoids from *Isodon weisiensis* CY Wu[J]. Zeitschrift für Naturforschung B, 2005, 60(7): 805-810.

Caution: Product has not been fully validated for medical applications. For research use only.

Tel: 609-228-6898

Fax: 609-228-5909

E-mail: tech@MedChemExpress.com

Address: 1 Deer Park Dr, Suite Q, Monmouth Junction, NJ 08852, USA