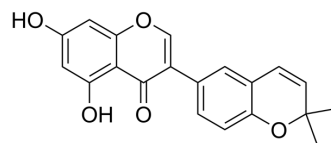


Isoderrone

Cat. No.:	HY-N3492
CAS No.:	121747-89-5
Molecular Formula:	C ₂₀ H ₁₆ O ₅
Molecular Weight:	336.34
Target:	Others
Pathway:	Others
Storage:	Please store the product under the recommended conditions in the Certificate of Analysis.



BIOLOGICAL ACTIVITY

Description

Isoderrone is a new isoflavone isolated from the methanol extractives from white lupin (cv. Kievskij Mutant) roots^[1].

REFERENCES

[1]. Satoshi Tahara, et, al. Seventeen isoflavonoids from *Lupinus albus* roots. *Phytochemistry*. 1998, 28, 3.

Caution: Product has not been fully validated for medical applications. For research use only.

Tel: 609-228-6898

Fax: 609-228-5909

E-mail: tech@MedChemExpress.com

Address: 1 Deer Park Dr, Suite Q, Monmouth Junction, NJ 08852, USA