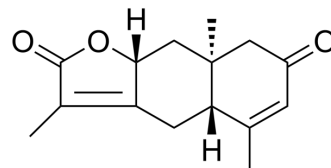


Chlorantholide C

Cat. No.:	HY-N3579
CAS No.:	1372558-35-4
Molecular Formula:	C ₁₅ H ₁₈ O ₃
Molecular Weight:	246.3
Target:	Others
Pathway:	Others
Storage:	Please store the product under the recommended conditions in the Certificate of Analysis.



BIOLOGICAL ACTIVITY

Description	Chlorantholide C, an eudesmane-type sesquiterpene lactone, can be isolated from <i>Chloranthus elatior</i> ^[1] .
-------------	---

REFERENCES

[1]. Wang F, et al. Chlorantholides A-F, eudesmane-type sesquiterpene lactones from *Chloranthus elatior*. *Phytochemistry*. 2012 May;77:312-7.

Caution: Product has not been fully validated for medical applications. For research use only.

Tel: 609-228-6898

Fax: 609-228-5909

E-mail: tech@MedChemExpress.com

Address: 1 Deer Park Dr, Suite Q, Monmouth Junction, NJ 08852, USA