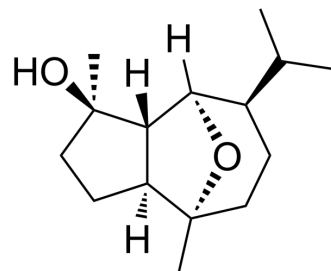


Chrysothol

Cat. No.:	HY-N3585
CAS No.:	911714-91-5
Molecular Formula:	C ₁₅ H ₂₆ O ₂
Molecular Weight:	238.37
Target:	Others
Pathway:	Others
Storage:	Please store the product under the recommended conditions in the Certificate of Analysis.



BIOLOGICAL ACTIVITY

Description

Chrysothol can be isolated from the aerial part of *Chrysothamnus viscidiflorus* var. and has anticancer activity^[1].

REFERENCES

[1]. Ahmed AA, et al. Constituents of *Chrysothamnus viscidiflorus*. *Phytochemistry*. 2006 Jul;67(14):1547-53.

Caution: Product has not been fully validated for medical applications. For research use only.

Tel: 609-228-6898

Fax: 609-228-5909

E-mail: tech@MedChemExpress.com

Address: 1 Deer Park Dr, Suite Q, Monmouth Junction, NJ 08852, USA