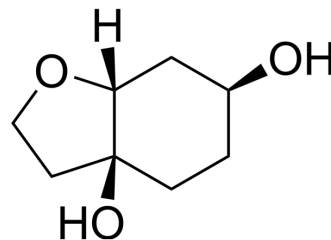


## (±)-Cleroidindicin E

Cat. No.:	HY-N3601
CAS No.:	165197-71-7
Molecular Formula:	C <sub>8</sub> H <sub>14</sub> O <sub>3</sub>
Molecular Weight:	158.19
Target:	Others
Pathway:	Others
Storage:	Please store the product under the recommended conditions in the Certificate of Analysis.



### BIOLOGICAL ACTIVITY

#### Description

(±)-Cleroidindicin E is a natural compound isolated from the herbs of *Clerodendrum indicum*<sup>[1]</sup>.

### REFERENCES

[1]. Wenderski TA, et al. Enantioselective total synthesis of all of the known chiral cleroidindicins (C-F): clarification among optical rotations and assignments. *J Org Chem.* 2009;74(11):4104-4109.

**Caution: Product has not been fully validated for medical applications. For research use only.**

Tel: 609-228-6898

Fax: 609-228-5909

E-mail: tech@MedChemExpress.com

Address: 1 Deer Park Dr, Suite Q, Monmouth Junction, NJ 08852, USA