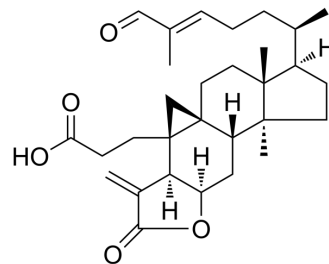


Coronalolide

Cat. No.:	HY-N3626
CAS No.:	268214-51-3
Molecular Formula:	C ₃₀ H ₄₂ O ₅
Molecular Weight:	482.65
Target:	Others
Pathway:	Others
Storage:	Please store the product under the recommended conditions in the Certificate of Analysis.



BIOLOGICAL ACTIVITY

Description

Coronalolide is a natural triterpene with anticancer effects. Coronalolide exhibits a broad cytotoxic activity for human breast (BT474), gastric (KATO-3), lung (CHAGO), colon (SW-620), and liver (Hep-G2) cancer cell lines, with IC₅₀ values of 6.59 µg/mL, 5.85 µg/mL, 5.42 µg/mL, 4.98 µg/mL, and 6.41 µg/mL, respectively^[1].

REFERENCES

[1]. Thanesuan Nuanyai, et al. Cytotoxic 3,4-seco-cycloartane triterpenes from *Gardenia sootepensis*. *J Nat Prod*. 2009 Jun;72(6):1161-4.

Caution: Product has not been fully validated for medical applications. For research use only.

Tel: 609-228-6898

Fax: 609-228-5909

E-mail: tech@MedChemExpress.com

Address: 1 Deer Park Dr, Suite Q, Monmouth Junction, NJ 08852, USA