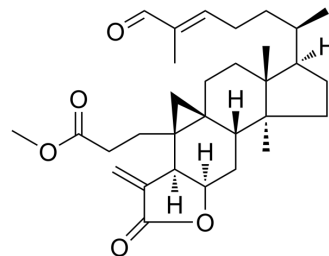


## Coronalolide methyl este

Cat. No.:	HY-N3627
CAS No.:	268214-50-2
Molecular Formula:	C <sub>31</sub> H <sub>44</sub> O <sub>5</sub>
Molecular Weight:	496.68
Target:	Others
Pathway:	Others
Storage:	Please store the product under the recommended conditions in the Certificate of Analysis.



### BIOLOGICAL ACTIVITY

#### Description

Coronalolide methyl ester (NSC 680073) is a natural triterpene with anticancer effects. Coronalolide methyl ester shows moderately cytotoxic to KATO-3, SW-620, and Hep-G2 cells., with IC<sub>50</sub> values of 8.64 µg/mL, 6.19 µg/mL, and 6.8 µg/mL, respectively<sup>[1]</sup>.

### REFERENCES

[1]. Thanesuan Nuanyai, et al. Cytotoxic 3,4-seco-cycloartane triterpenes from *Gardenia sootepensis*. *J Nat Prod*. 2009 Jun;72(6):1161-4.

**Caution: Product has not been fully validated for medical applications. For research use only.**

Tel: 609-228-6898

Fax: 609-228-5909

E-mail: tech@MedChemExpress.com

Address: 1 Deer Park Dr, Suite Q, Monmouth Junction, NJ 08852, USA