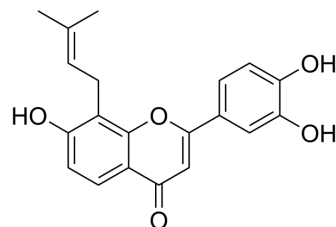


Corylifol C

Cat. No.:	HY-N3634
CAS No.:	775351-91-2
Molecular Formula:	C ₂₀ H ₁₈ O ₅
Molecular Weight:	338.35
Target:	Others
Pathway:	Others
Storage:	Please store the product under the recommended conditions in the Certificate of Analysis.



BIOLOGICAL ACTIVITY

Description

Corylifol C is a potent protein kinase inhibitor with IC₅₀ values of 8.7, 3.0, 2.1, 6.4, 4.5, 6.2, 2.3, 1.2, 5.1 µg/ml for ARK5, Aurora-A, Aurora-B, AXL, B-RAF-VE, CDK4/CycD1, TIE2, EGF-R, EPHB4, respectively^[1].

REFERENCES

[1]. Limper C, et al. Compounds isolated from *Psoralea corylifolia* seeds inhibit protein kinase activity and induce apoptotic cell death in mammalian cells. *J Pharm Pharmacol.* 2013 Sep;65(9):1393-408.

Caution: Product has not been fully validated for medical applications. For research use only.

Tel: 609-228-6898

Fax: 609-228-5909

E-mail: tech@MedChemExpress.com

Address: 1 Deer Park Dr, Suite Q, Monmouth Junction, NJ 08852, USA