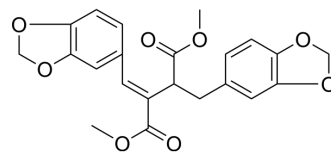


(7E)-7,8-Dehydroheliobupthalmin

Cat. No.:	HY-N3717
CAS No.:	103001-05-4
Molecular Formula:	C ₂₂ H ₂₀ O ₈
Molecular Weight:	412.39
Target:	Others
Pathway:	Others
Storage:	Please store the product under the recommended conditions in the Certificate of Analysis.



BIOLOGICAL ACTIVITY

Description	(7E)-7,8-Dehydroheliobupthalmin is a lignan derivative from <i>Platycladus orientalis</i> ^[1] .
-------------	--

REFERENCES

[1]. Li, Gang, et al. Separation and extraction of lignans derivatives from *Platycladus orientalis*. Patent CN113666902. 2021-11-19.

Caution: Product has not been fully validated for medical applications. For research use only.

Tel: 609-228-6898

Fax: 609-228-5909

E-mail: tech@MedChemExpress.com

Address: 1 Deer Park Dr, Suite Q, Monmouth Junction, NJ 08852, USA