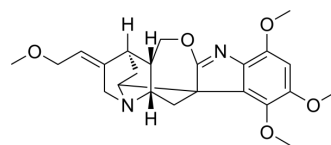


Gardneramine

Cat. No.:	HY-N3931
CAS No.:	34274-91-4
Molecular Formula:	C ₂₃ H ₂₈ N ₂ O ₅
Molecular Weight:	412.48
Target:	Others
Pathway:	Others
Storage:	Please store the product under the recommended conditions in the Certificate of Analysis.



BIOLOGICAL ACTIVITY

Description	Gardneramine is an orally active alkaloid that acts like papaverine. Gardneramine has peripheral vascular diastolic effect, direct inhibition on myocardium and central inhibition. Gardneramine showed antihypertensive, vasodilatation and atrial inhibition effects in rabbit, dog and guinea pig models, respectively. Gardneramine also inhibits the movement of smooth muscle organs such as the stomach and intestines ^[1] .
In Vitro	Gardneramine (80 µg/mL; 0-20 min) has inhibitory effect on the atria of guinea pigs ^[1] . MCE has not independently confirmed the accuracy of these methods. They are for reference only.
In Vivo	Gardneramine (4 mg/kg; i.v.; single dose) leads to a decrease in blood pressure in rabbits (up to 36.6%) ^[1] . Gardneramine (0.2 mg/kg, 0.4 mg/kg; i.a.; single dose) increases blood flow rate and produces vasodilation in the hind limbs of dogs ^[1] . Gardneramine (20 mg/kg, 40 mg/kg, and 80 mg/kg; i.p.; single dose) inhibits the movement of smooth muscle organs such as the stomach and intestines in mice ^[1] . Gardneramine (20 mg/kg; p.o.; single dose) mice were treated with small intestine removal, showing relaxation and slight inhibition of stress ion production ^[1] . MCE has not independently confirmed the accuracy of these methods. They are for reference only.

REFERENCES

[1]. Harada M, et al. [Pharmacological studies on gardneria alkaloids. II. Peripheral effects (effects on circulatory and digestive systems)]. Yakugaku Zasshi. 1972 Dec;92(12):1540-6. Japanese.

Caution: Product has not been fully validated for medical applications. For research use only.

Tel: 609-228-6898

Fax: 609-228-5909

E-mail: tech@MedChemExpress.com

Address: 1 Deer Park Dr, Suite Q, Monmouth Junction, NJ 08852, USA