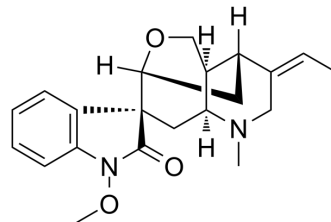


## Humantenine

Cat. No.:	HY-N4031
CAS No.:	82375-29-9
Molecular Formula:	C <sub>21</sub> H <sub>26</sub> N <sub>2</sub> O <sub>3</sub>
Molecular Weight:	354.44
Target:	Others
Pathway:	Others
Storage:	Please store the product under the recommended conditions in the Certificate of Analysis.



### BIOLOGICAL ACTIVITY

#### Description

Humantenine is a indole alkaloid compound isolated from *Gelsemium elegans*<sup>[1]</sup>.

### REFERENCES

[1]. You-Kai Xu, et al. Koumine, Humantenine, and Yohimbane Alkaloids From *Gelsemium Elegans*. *J Nat Prod*. 2015 Jul 24;78(7):1511-7.

**Caution: Product has not been fully validated for medical applications. For research use only.**

Tel: 609-228-6898

Fax: 609-228-5909

E-mail: tech@MedChemExpress.com

Address: 1 Deer Park Dr, Suite Q, Monmouth Junction, NJ 08852, USA