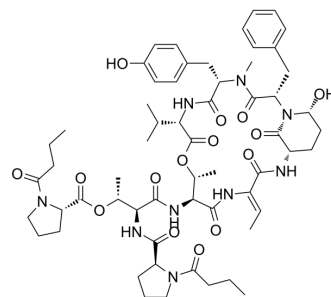


## Rivulariapeptolides 1155

Cat. No.:	HY-N4330
Molecular Formula:	C <sub>59</sub> H <sub>81</sub> N <sub>9</sub> O <sub>15</sub>
Molecular Weight:	1156.33
Target:	Ser/Thr Protease
Pathway:	Metabolic Enzyme/Protease
Storage:	Please store the product under the recommended conditions in the Certificate of Analysis.



### BIOLOGICAL ACTIVITY

#### Description

Rivulariapeptolides 1155 is a potent serine protease inhibitor with IC<sub>50</sub>s of 41.84, 4.94, 56.54 nM for chymotrypsin, elastase, prpteinase K, respectively<sup>[1]</sup>.

### REFERENCES

[1]. Reher R, et al. Native metabolomics identifies the rivulariapeptolide family of protease inhibitors. Nat Commun. 2022 Aug 8;13(1):4619.

**Caution: Product has not been fully validated for medical applications. For research use only.**

Tel: 609-228-6898

Fax: 609-228-5909

E-mail: tech@MedChemExpress.com

Address: 1 Deer Park Dr, Suite Q, Monmouth Junction, NJ 08852, USA