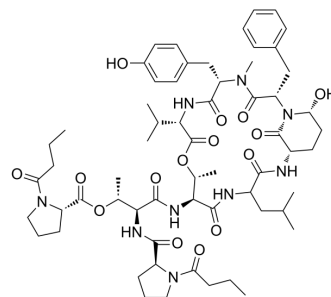


Rivulariapeptolides 1185

Cat. No.:	HY-N4331
Molecular Formula:	C ₆₁ H ₈₇ N ₉ O ₁₅
Molecular Weight:	1186.39
Target:	Ser/Thr Protease
Pathway:	Metabolic Enzyme/Protease
Storage:	Please store the product under the recommended conditions in the Certificate of Analysis.



BIOLOGICAL ACTIVITY

Description	Rivulariapeptolides 1185 is a high potent and selective serine protease inhibitor with IC ₅₀ values of 13.17 nM, 23.59 nM and 55.26 nM for chymotrypsin, elastase and proteinase K, respectively ^[1] .
IC ₅₀ & Target	IC ₅₀ : 13.17 nM (chymotrypsin); 23.59 nM (elastase) and 55.26 nM (proteinase K) ^[1] .
In Vitro	Rivulariapeptolides 1185 (0-3 μM, 40 min) has high potency and distinct selectivity with IC ₅₀ values of 13.17 nM, 23.59 nM and 55.26 nM for chymotrypsin, elastase and proteinase K, respectively ^[1] . MCE has not independently confirmed the accuracy of these methods. They are for reference only.

REFERENCES

[1]. Raphael Reher, et al. Native metabolomics identifies the rivulariapeptolide family of protease inhibitors. Nat Commun. 2022 Aug 8;13(1):4619.

Caution: Product has not been fully validated for medical applications. For research use only.

Tel: 609-228-6898

Fax: 609-228-5909

E-mail: tech@MedChemExpress.com

Address: 1 Deer Park Dr, Suite Q, Monmouth Junction, NJ 08852, USA